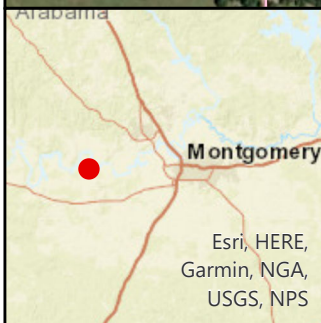


Esri, HERE, Garmin, IPC, Vantor

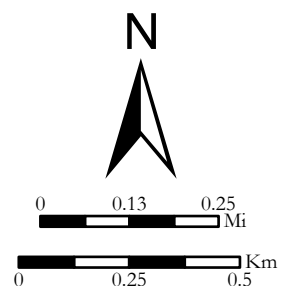


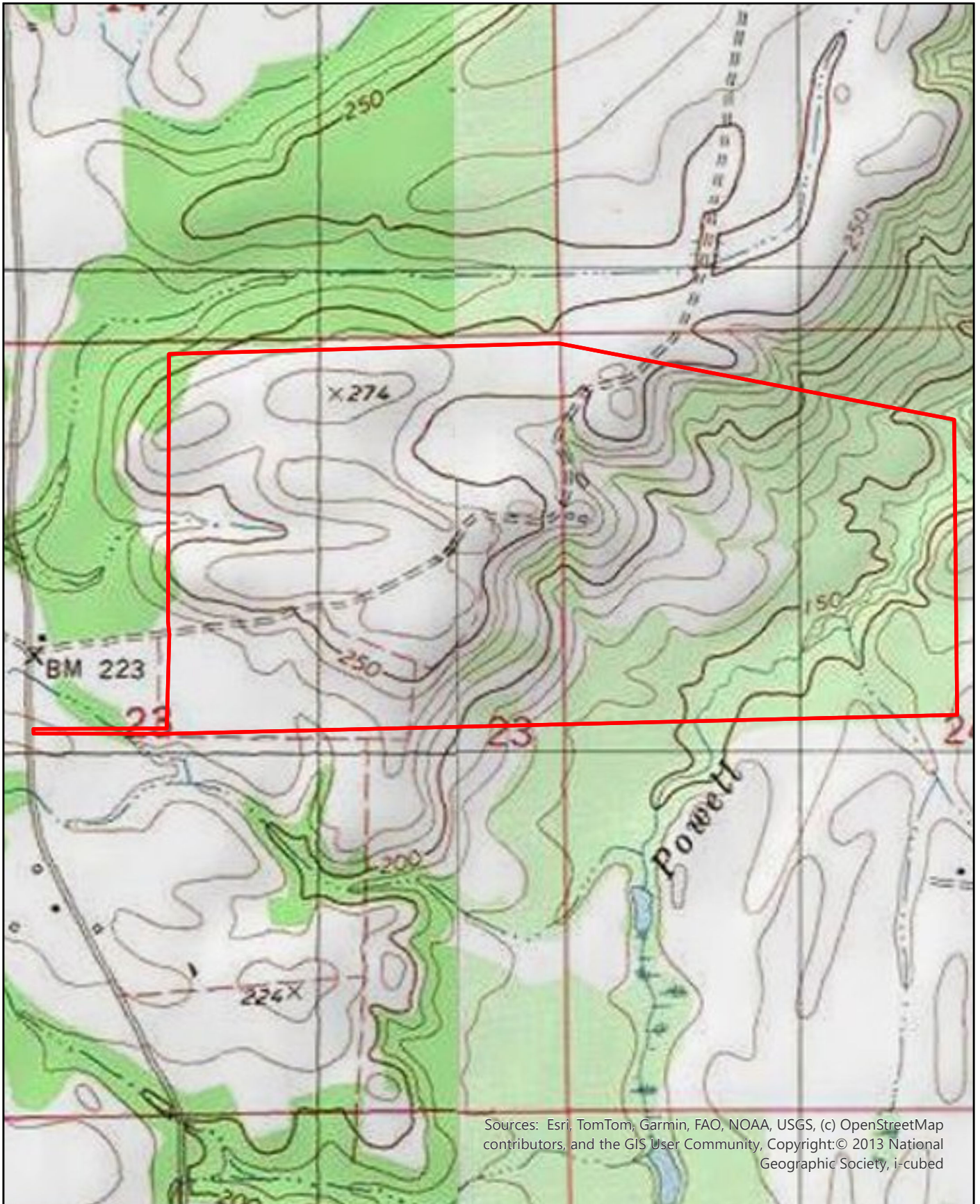
# Woodland Farms

302+- Acres Lowndes County, AL  
T16N R14E S23 & 24

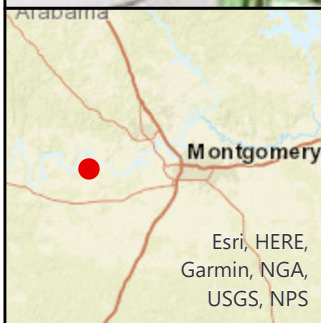
Larson & McGowin  
PROPERTIES

Coordinate System: WGS 1984 Web Mercator Auxiliary Sphere





Sources: Esri, TomTom, Garmin, FAO, NOAA, USGS, (c) OpenStreetMap contributors, and the GIS User Community, Copyright:© 2013 National Geographic Society, i-cubed

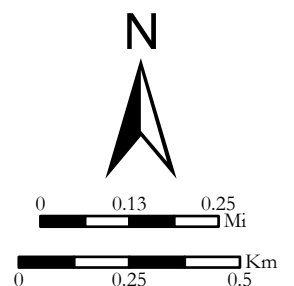


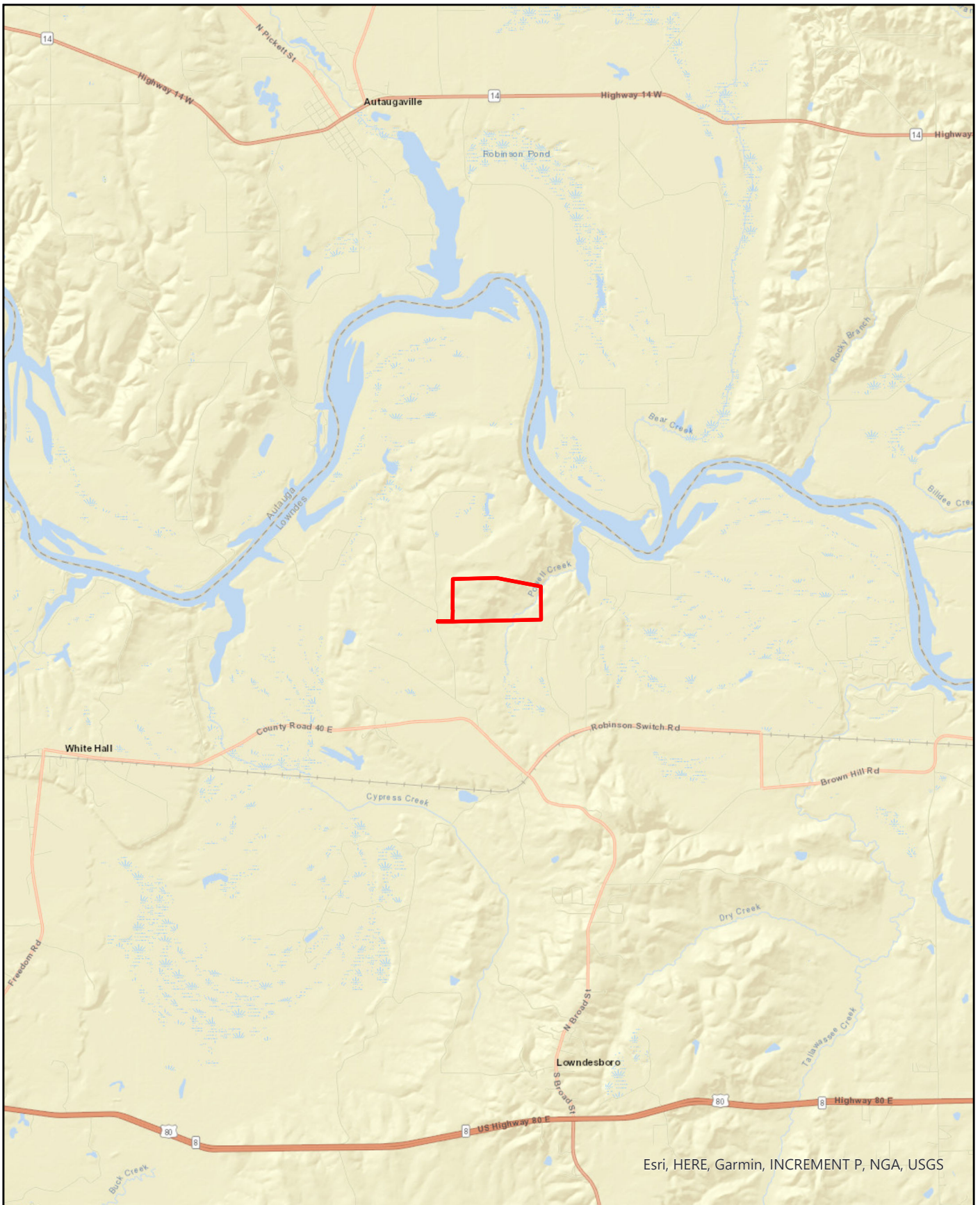
# Woodland Farms

302+- Acres Lowndes County, AL  
T16N R14E S23 & 24

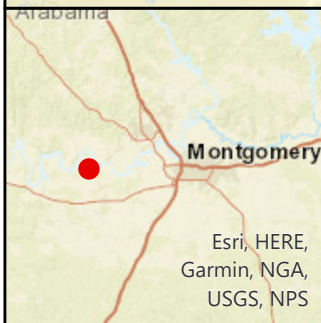
Larson & McGowin  
PROPERTIES

Coordinate System: WGS 1984 Web Mercator Auxiliary Sphere





Esri, HERE, Garmin, INCREMENT P, NGA, USGS



# Woodland Farms

302+- Acres Lowndes County, AL  
T16N R14E S23 & 24

Larson & McGowin  
PROPERTIES

Coordinate System: WGS 1984 Web Mercator Auxiliary Sphere

