

Larson & McGowin

PROPERTIES

Thomas Road TRACT

224 ± Acres in Crenshaw County, Alabama
\$595,000



The Thomas Road tract is in Crenshaw County just north of Luverne. The property has quality Loblolly Pine Plantations on approximately 115 acres. These plantations were established in 2004 and 2005 and are merchantable at this point. The remaining acreage consist of hardwood drainage systems with both hard and soft hardwood species present. These drainage systems provide excellent wildlife corridors for those looking for a recreational property. Offered at \$595,000



**Chandler
Graham**
Qualifying Broker

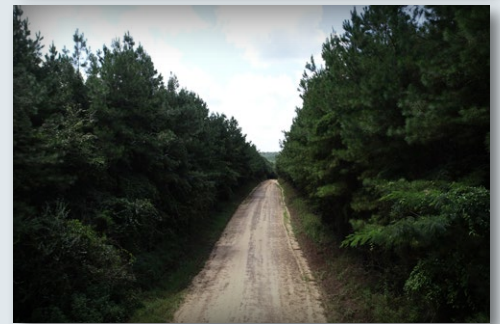
cgraham@larsonmcgowin.com
Phone: 205.977.7706 | Mobile: 334.734.1382

www.larsonmcgowinproperties.com

Larson &
McGowin
PROPERTIES

Thomas Road
TRACT

224 ± Acres in Crenshaw County, Alabama
\$595,000

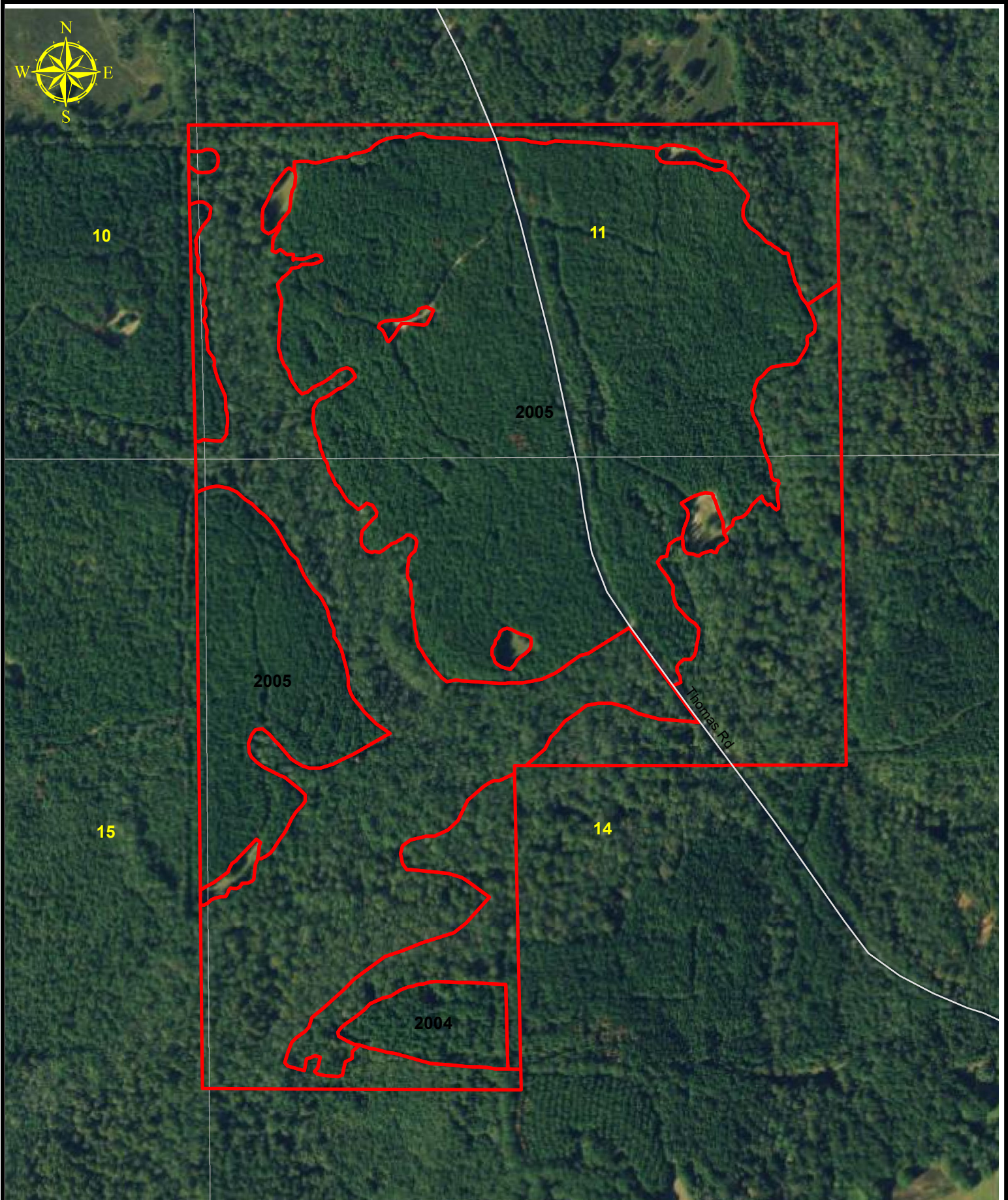


Chandler
Graham
Qualifying Broker

cgraham@larsonmcgowin.com

Phone: 205.977.7706 | Mobile: 334.734.1382

www.larsonmcgowinproperties.com



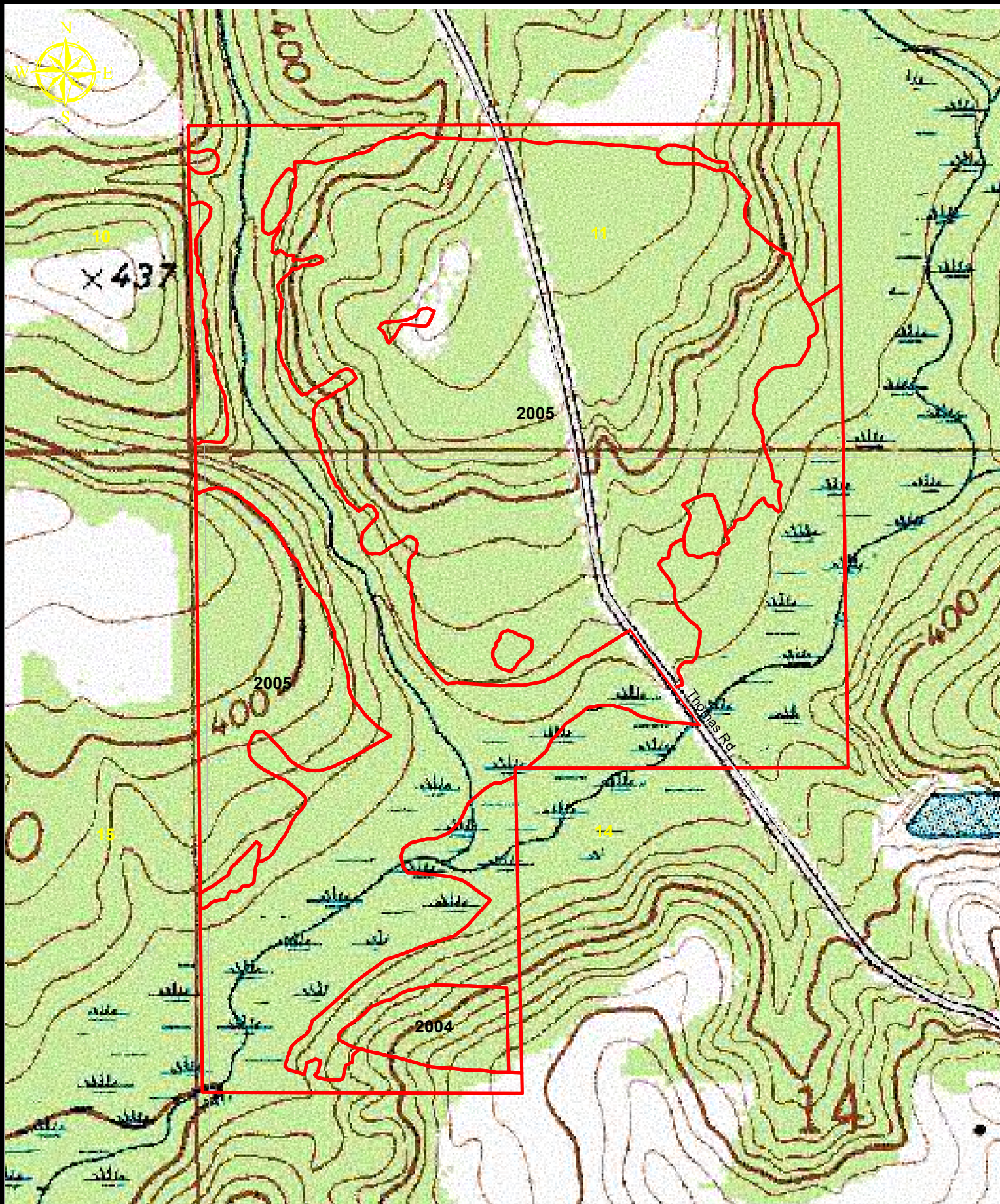
660 330 0 Feet

Thomas Road Tract
224 +/- Acres
Crenshaw County, AL

August 14, 2020

Larson & McGowin
PROPERTIES

Map is for illustrative purposes only. Accuracy is neither warranted nor guaranteed.



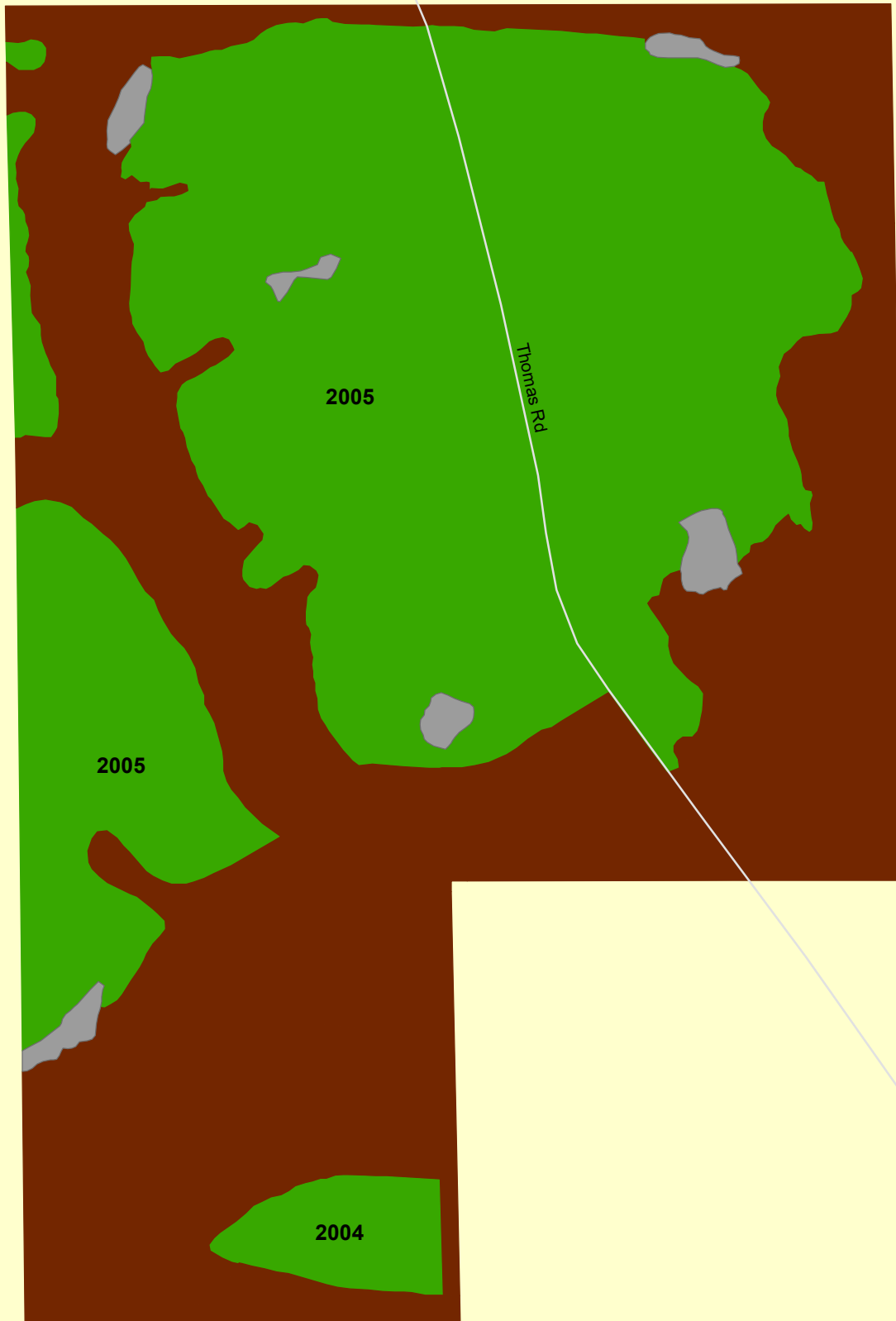
660 330 0 Feet

Thomas Road Tract
224 +- Acres
Crenshaw County, AL

August 14, 2020

Larson & McGowin
PROPERTIES

Map is for illustrative purposes only. Accuracy is neither warranted nor guaranteed.



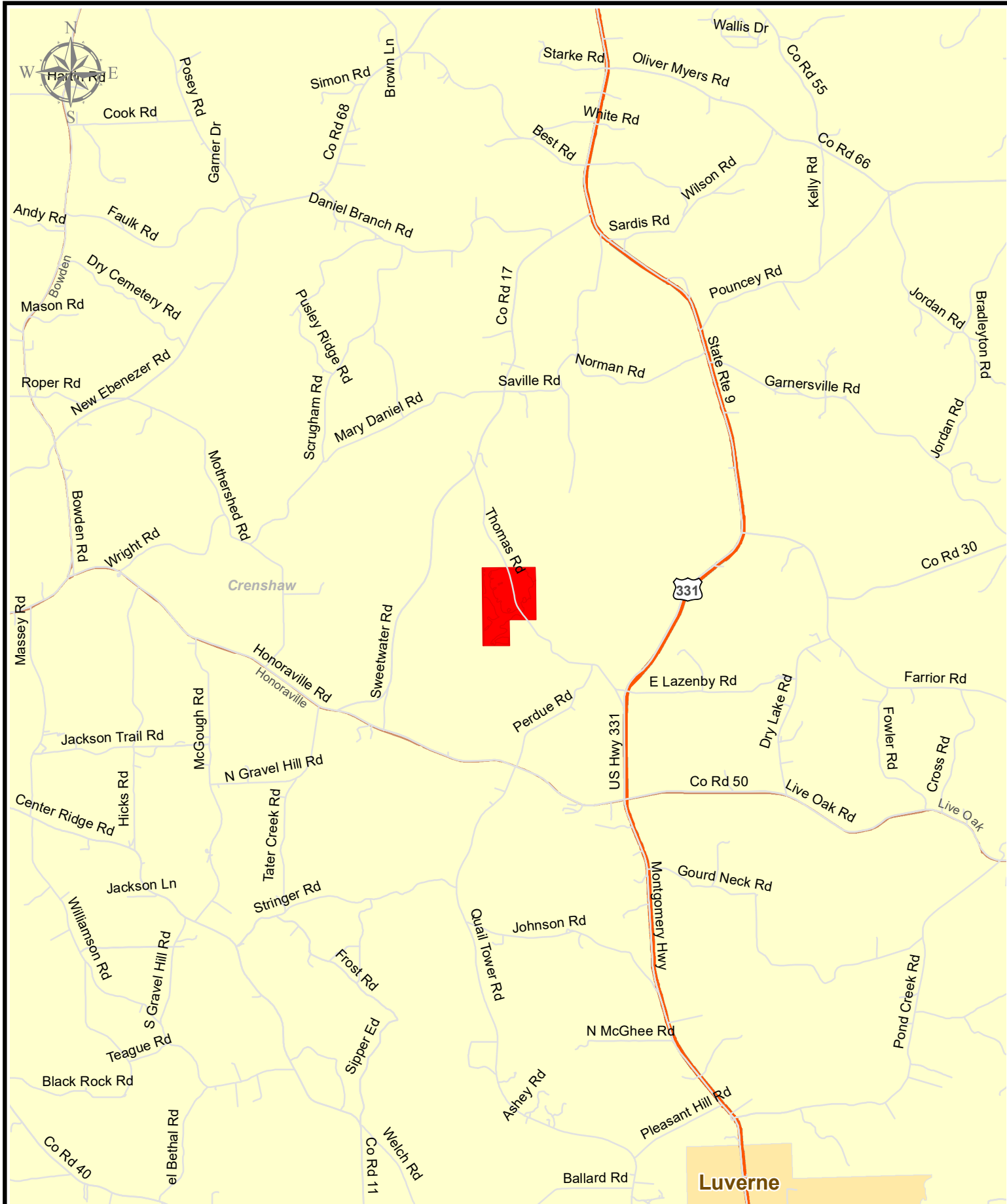
660 330 0 Feet

Thomas Road Tract
224+- Acres
Crenshaw County, AL

July 29, 2020

Larson & McGowin
PROPERTIES

Map is for illustrative purposes only. Accuracy is neither warranted nor guaranteed.



Thomas Road Tract
224+- Acres
Crenshaw County, AL

July 29, 2020

Map is for illustrative purposes only. Accuracy is neither warranted nor guaranteed.

Larson & McGowin
PROPERTIES