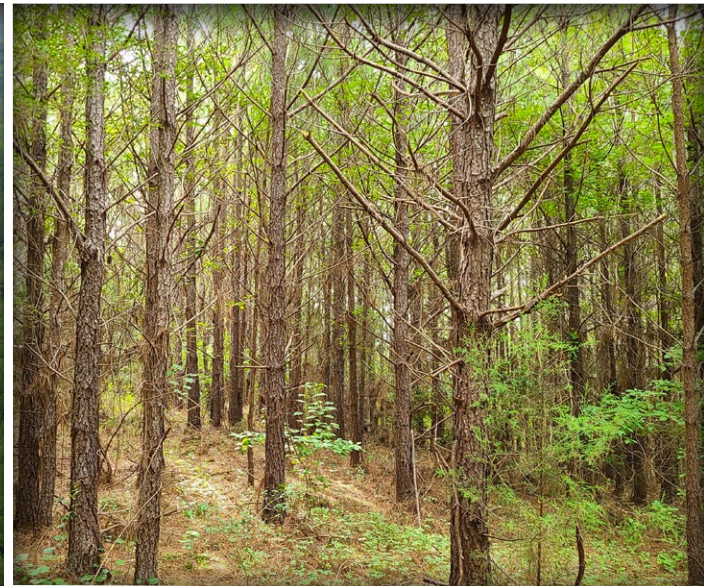


Larson & McGowin PROPERTIES

Spratt TRACT

73 ± Acres In Perry County, Alabama
\$138,700



Located in Perry County, Alabama the Spratt tract is approximately 73± acres which is covered by an approximate 11-year-old Loblolly Pine plantation. There is a natural hardwood stand on the western side of the tract providing diversity in habitat for wildlife. The property does have some elevation providing views across the surrounding area. Access to this tract is across adjoining landowners via a recently improved dirt road. Offered at \$138,700.



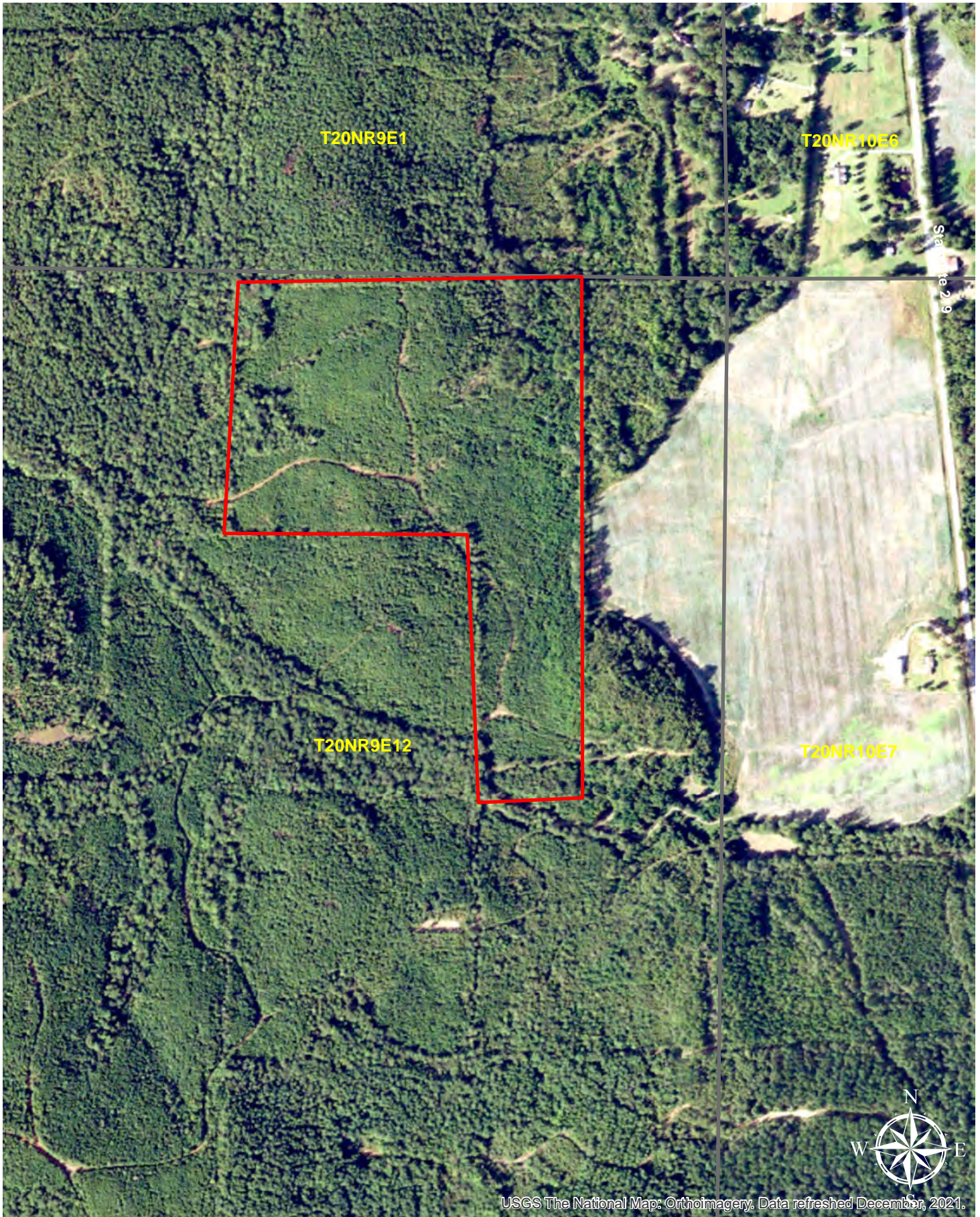
**Chandler
Graham**
Qualifying Broker

cgraham@larsonmcgowin.com

Phone: 205.977.7706 | Mobile: 334.734.1382

www.larsonmcgowinproperties.com

500 Office Park Drive Suite 430 Birmingham, AL 35223 | Branch Offices: Greenville, Alabama | Mobile, Alabama | Merryville, Louisiana
Licensed in AL, MS, TN, LA, TX, AR, GA, KY, FL, & SC



USGS The National Map: Orthoimagery. Data refreshed December, 2021.

660 330 0 Feet



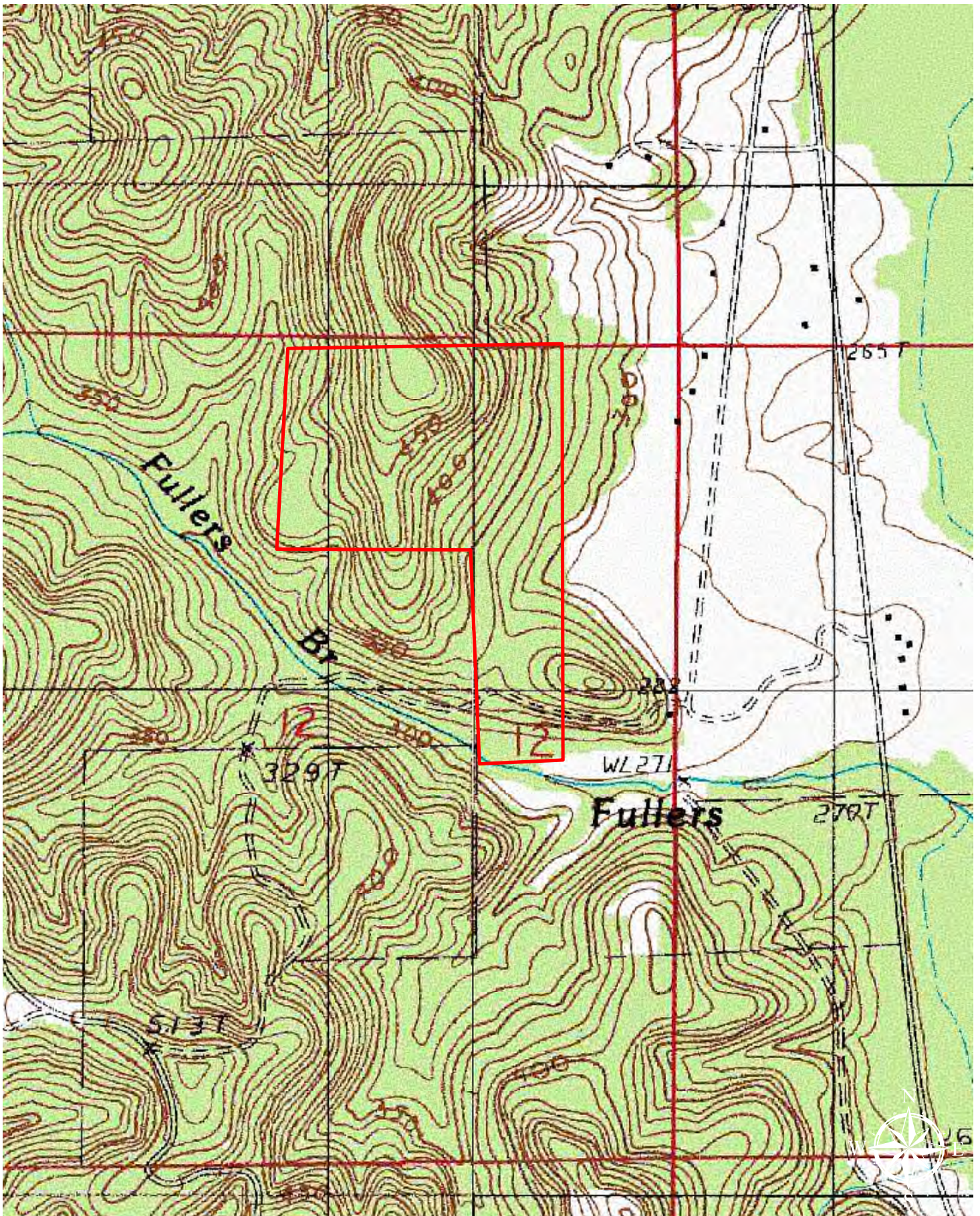
Sprott Tract
73+- Acres
Perry County, AL

July 6, 2022



Larson & McGowin
PROPERTIES

Map is for illustrative purposes only. Accuracy is neither warranted nor guaranteed.



660 330 0 Feet

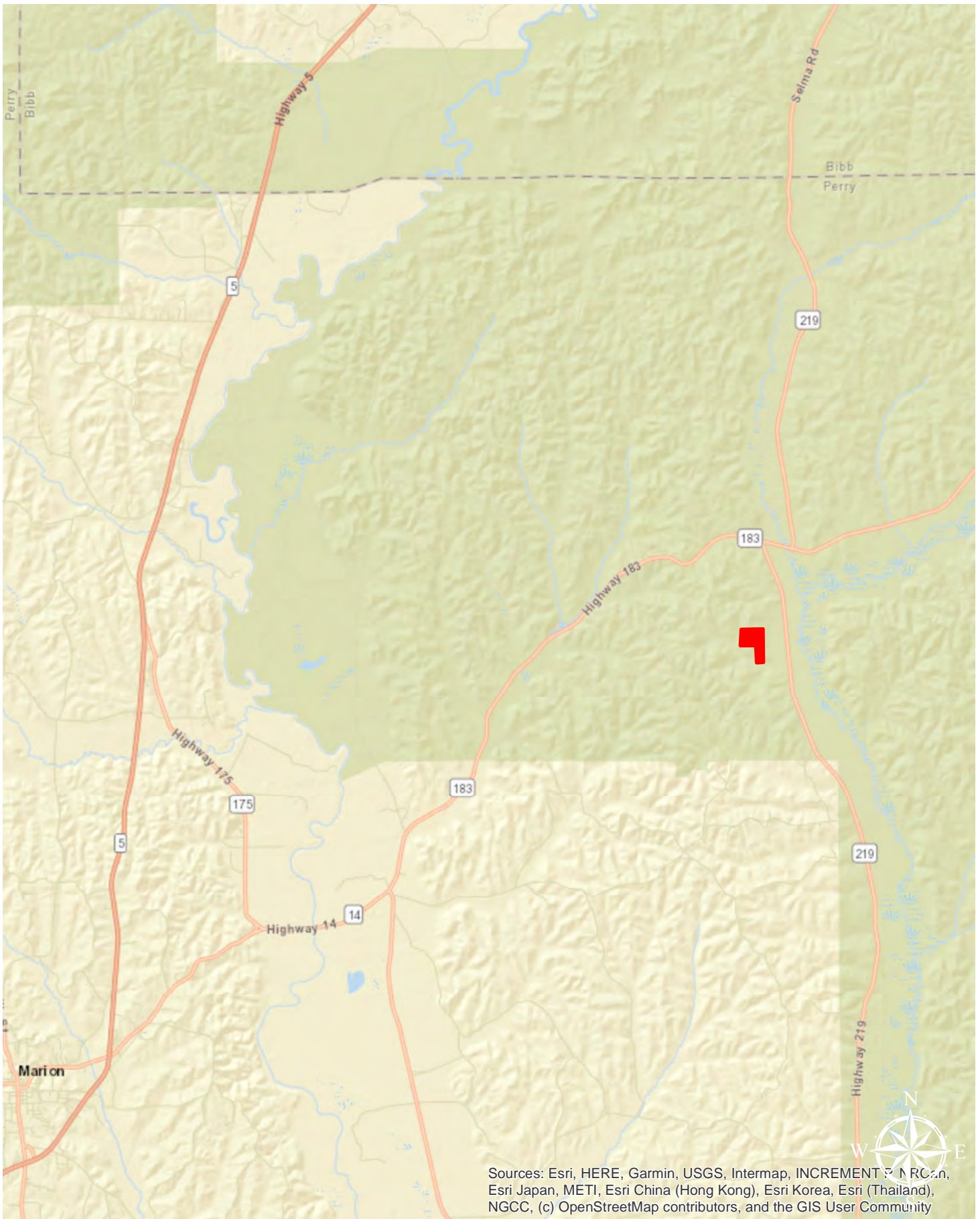
Sprott Tract
73+ Acres
Perry County, AL

July 6, 2022

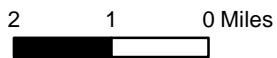


Larson & McGowin
PROPERTIES

Map is for illustrative purposes only. Accuracy is neither warranted nor guaranteed.



Sources: Esri, HERE, Garmin, USGS, Intermap, INCREMENT P, NRCan, Esri Japan, METI, Esri China (Hong Kong), Esri Korea, Esri (Thailand), NGCC, (c) OpenStreetMap contributors, and the GIS User Community



Sprott Tract
73+- Acres
Perry County, AL

July 6, 2022



Larson & McGowin
PROPERTIES

Map is for illustrative purposes only. Accuracy is neither warranted nor guaranteed.