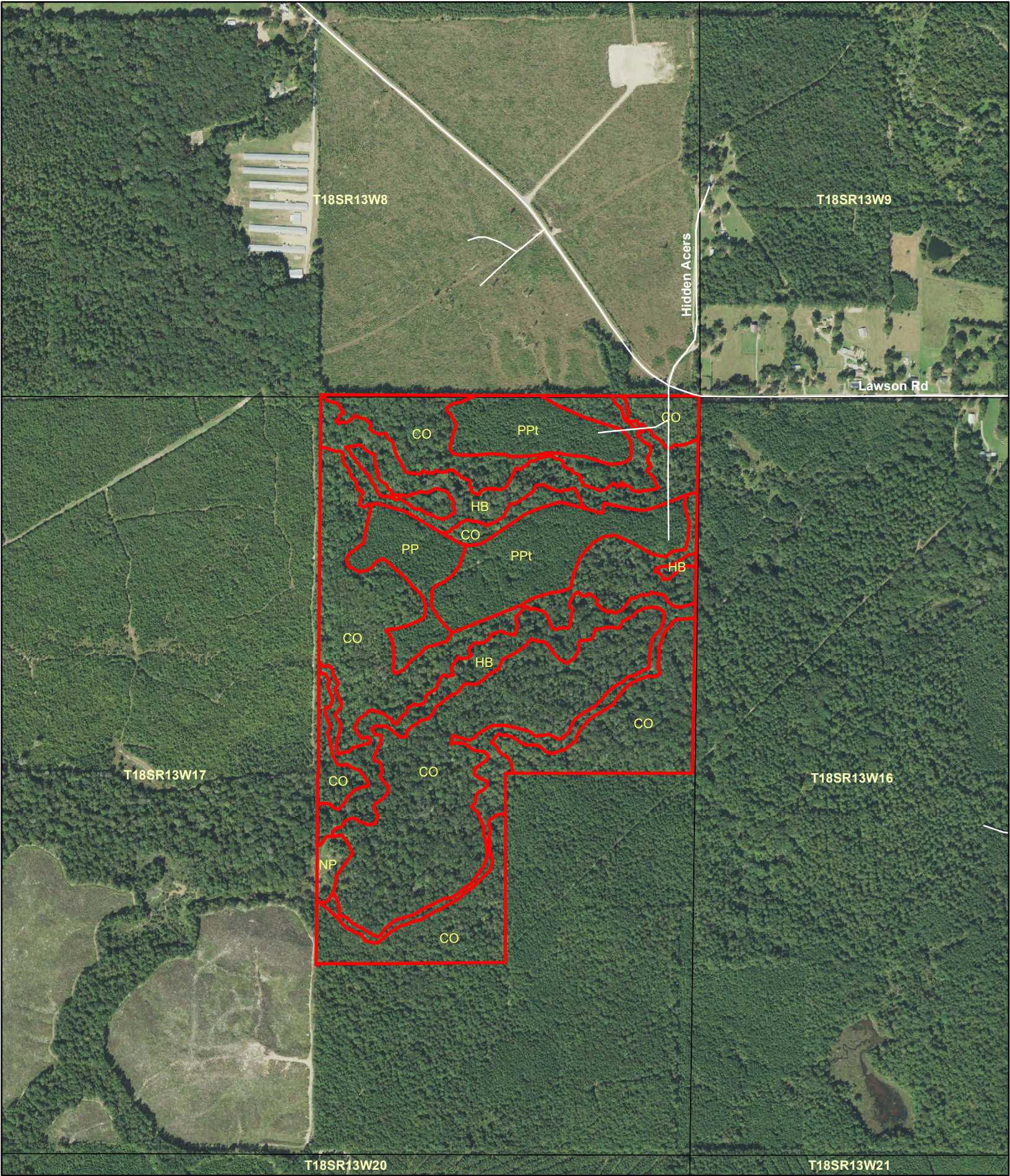


1.5 0.75 0 1.5 Miles

South Union 93
202 +- Acres Union County, AR

Map is for illustrative purposes only. Accuracy is not guaranteed

Larson & McGowin
PROPERTIES



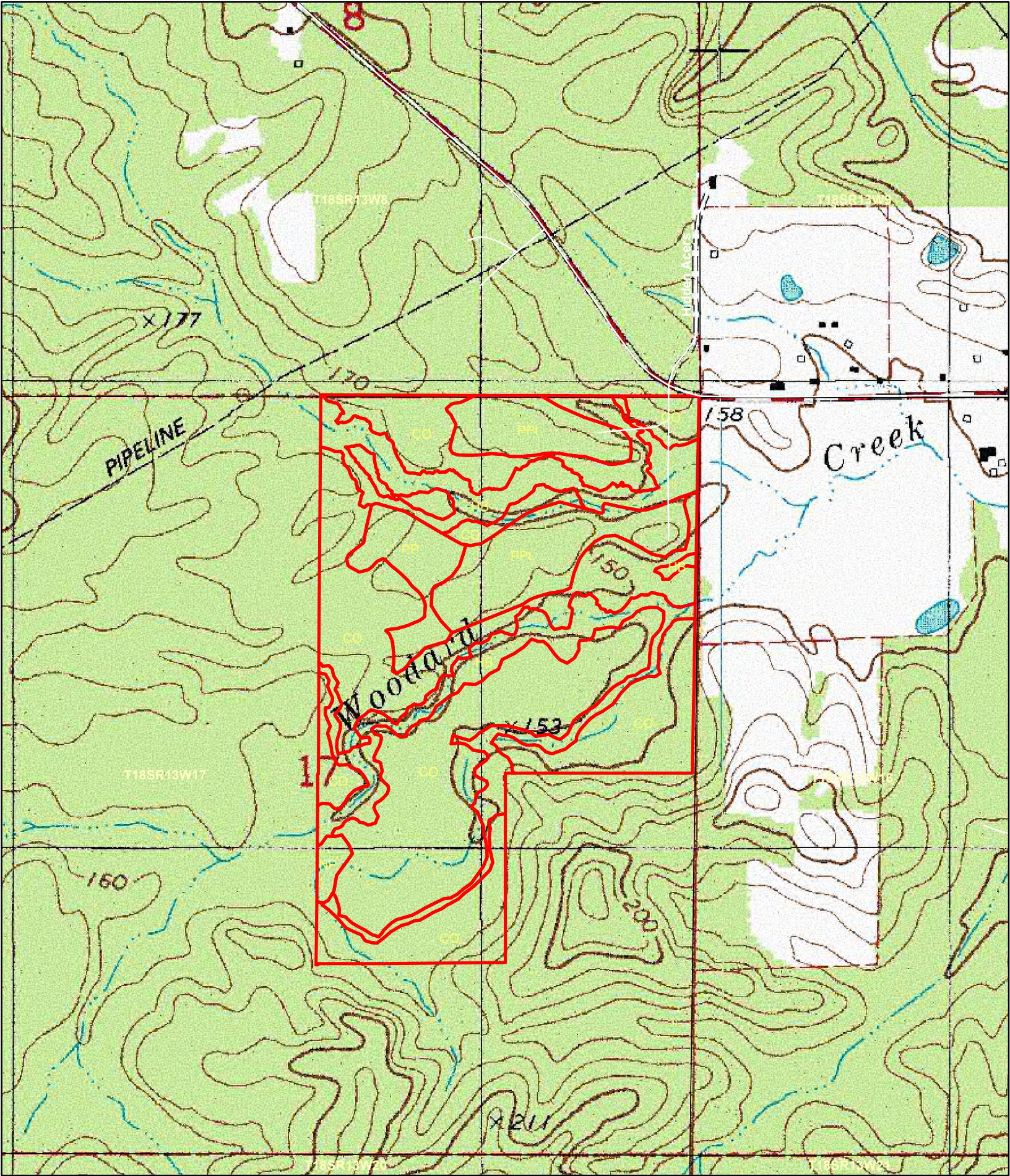
600 300 0 600 Feet

South Union 93
202 +- Acres Union County,AR

Larson & McGowin
PROPERTIES

Map is for illustrative purposes only. Accuracy is not guaranteed





600 300 0 600 Feet

South Union 93
202 +- Acres Union County, AR

Larson & McGowin
PROPERTIES

Map is for illustrative purposes only. Accuracy is not guaranteed

Larson & McGowin

PROPERTIES

Total Tons by Cover Type and Establishment Year South Union (8) - 93

			Tons											
			Pine					Hardwood**					Overall	
Cover Type	Est. Year	Acres*	Sawtimber	Pole	Chip-n-saw	Pulpwood	Topwood	Total	Sawtimber	Pulpwood	Topwood	Total	Total	Total
Cutover	2019	125	-	-	-	-	-	-	-	-	-	-	-	-
Non-Forest	NA	2	-	-	-	-	-	-	-	-	-	-	-	-
Hardwood Bottomland***	NA	38	114	2	0	14	9	139	979	1,174	216	2,369	2,508	
Pine Plantation	2001	9	70	-	45	1,400	45	1,560	-	-	-	-	-	1,560
Pine Plantation - Thinned	2001	28	239	-	164	1,472	134	2,009	-	21	-	21	2,030	
Grand Total		201	423	2	210	2,886	187	3,708	979	1,195	216	2,390	6,098	

* GIS estimated acres. Actual and/or deed acres may vary.

** Includes cypress and cedar.

*** Strata level metrics. Stands not sampled due to harvesting.

Total MBF by Cover Type and Establishment Year South Union (8) - 93

			MBF							
			Pine			Hardwood**			Overall	
Cover Type	Est. Year	Acres*	Sawtimber	Pole	Total	Oak Saw	Misc. Saw	Total	Total	Total
Cutover	2019	125	-	-	-	-	-	-	-	-
Non-Forest	NA	2	-	-	-	-	-	-	-	-
Hardwood Bottomland***	NA	38	19	0	20	68	53	121	141	
Pine Plantation	2001	9	7	-	7	-	-	-	-	7
Pine Plantation - Thinned	2001	28	26	-	26	-	-	-	-	26
Grand Total		201	53	0	53	68	53	121	174	

* GIS estimated acres. Actual and/or deed acres may vary.

** Includes cypress and cedar.

*** Strata level metrics. Stands not sampled due to harvesting.

Information provided is believed to be accurate but is not guaranteed. Buyers should conduct their own due diligence. Cruise Date 1-1-2019