





Larson & McGowin PROPERTIES

Rudolph Road TRACT

1109 ± Acres in Lowndes County, Alabama
\$2,550,000



An excellent timberland asset the Rudolph Road Tract contains almost 795 acres of pine stands the majority of which are merchantable. Ample road frontage and a quality internal road system provide excellent access to all portions of the property. The tract also has the potential to be a wonderful recreational tract with gentle topography, quality soils and abundant wildlife. Offered at \$ 2,550,000



**Chandler
Graham**
Qualifying Broker

cgraham@larsonmcgowin.com
Phone: 205.977.7706 | Mobile: 334.734.1382

www.larsonmcgowinproperties.com



Larson &
McGowin
PROPERTIES

Rudolph
Road TRACT

1109 ± Acres in Lowndes County, Alabama
\$2,550,000

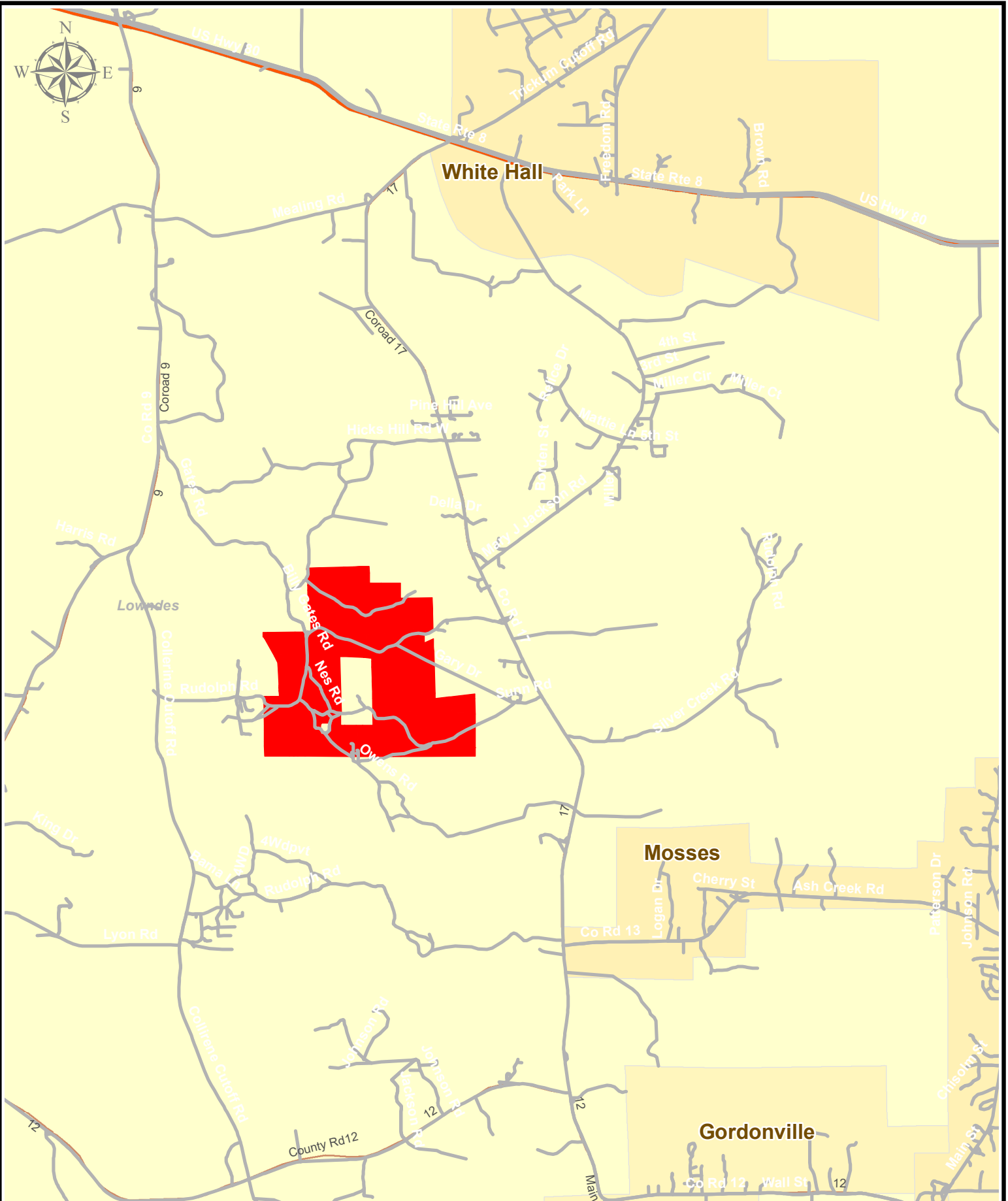


Chandler
Graham
Qualifying Broker

cgraham@larsonmcgowin.com

Phone: 205.977.7706 | Mobile: 334.734.1382

www.larsonmcgowinproperties.com

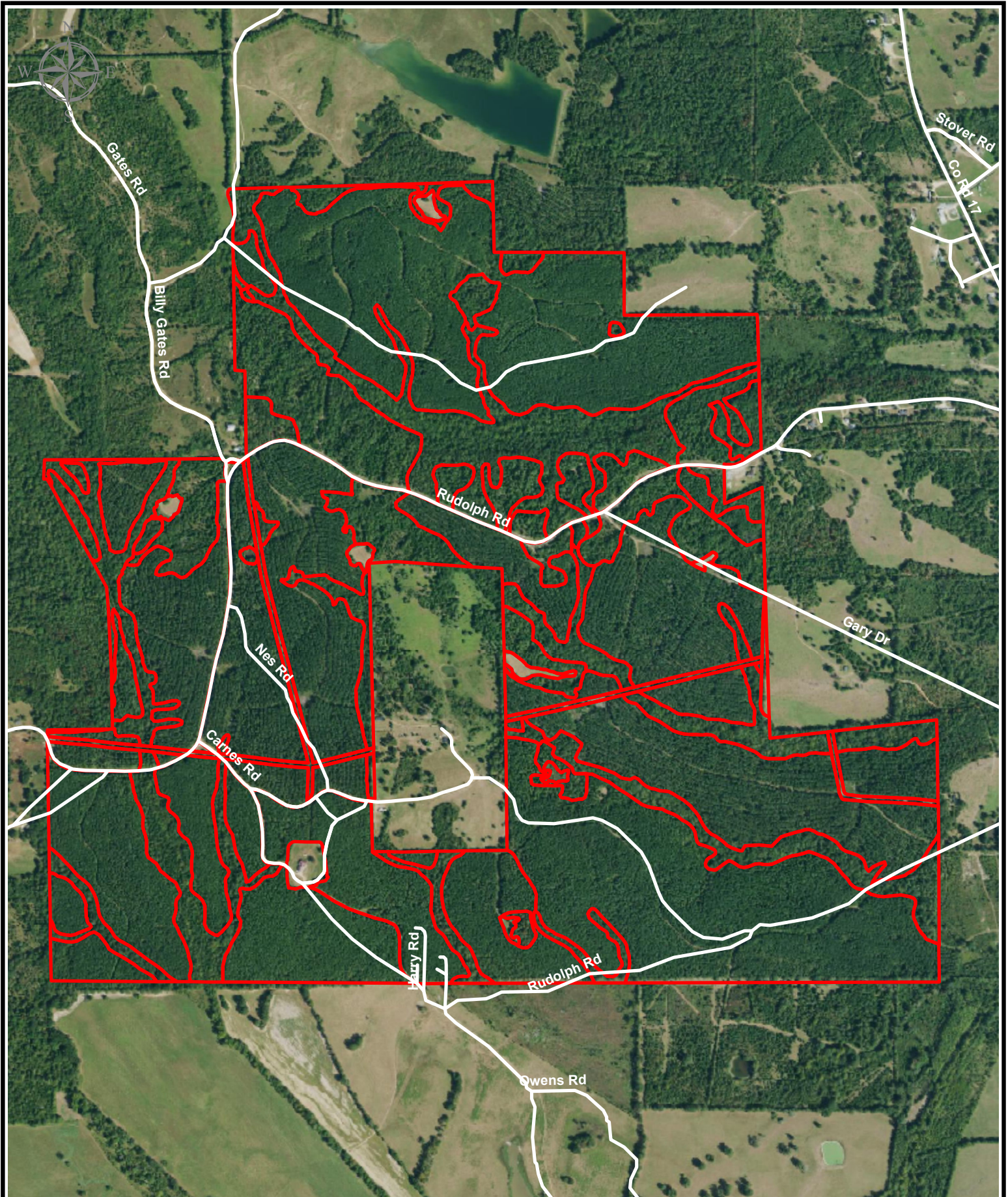


Rudolph Road Tract
1,109+- Acres
Lowndes County, AL

July 29, 2020

Map is for illustrative purposes only. Accuracy is neither warranted nor guaranteed.

Larson & McGowin
PROPERTIES



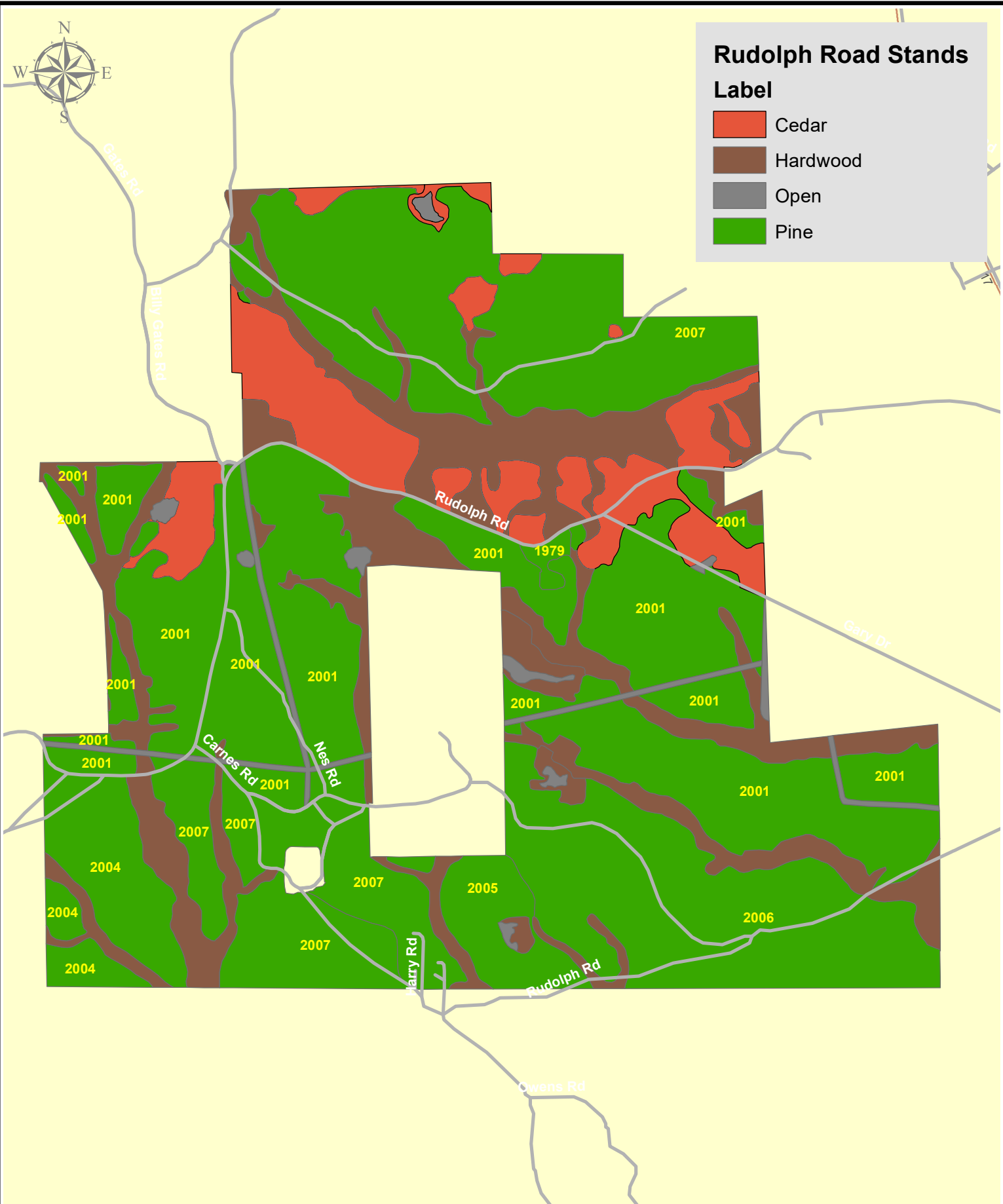
1,320 660 0 Feet

Rudolph Road Tract
1,109+- Acres
Lowndes County, AL

July 29, 2020

Map is for illustrative purposes only. Accuracy is neither warranted nor guaranteed.

**Larson &
McGowin**
PROPERTIES



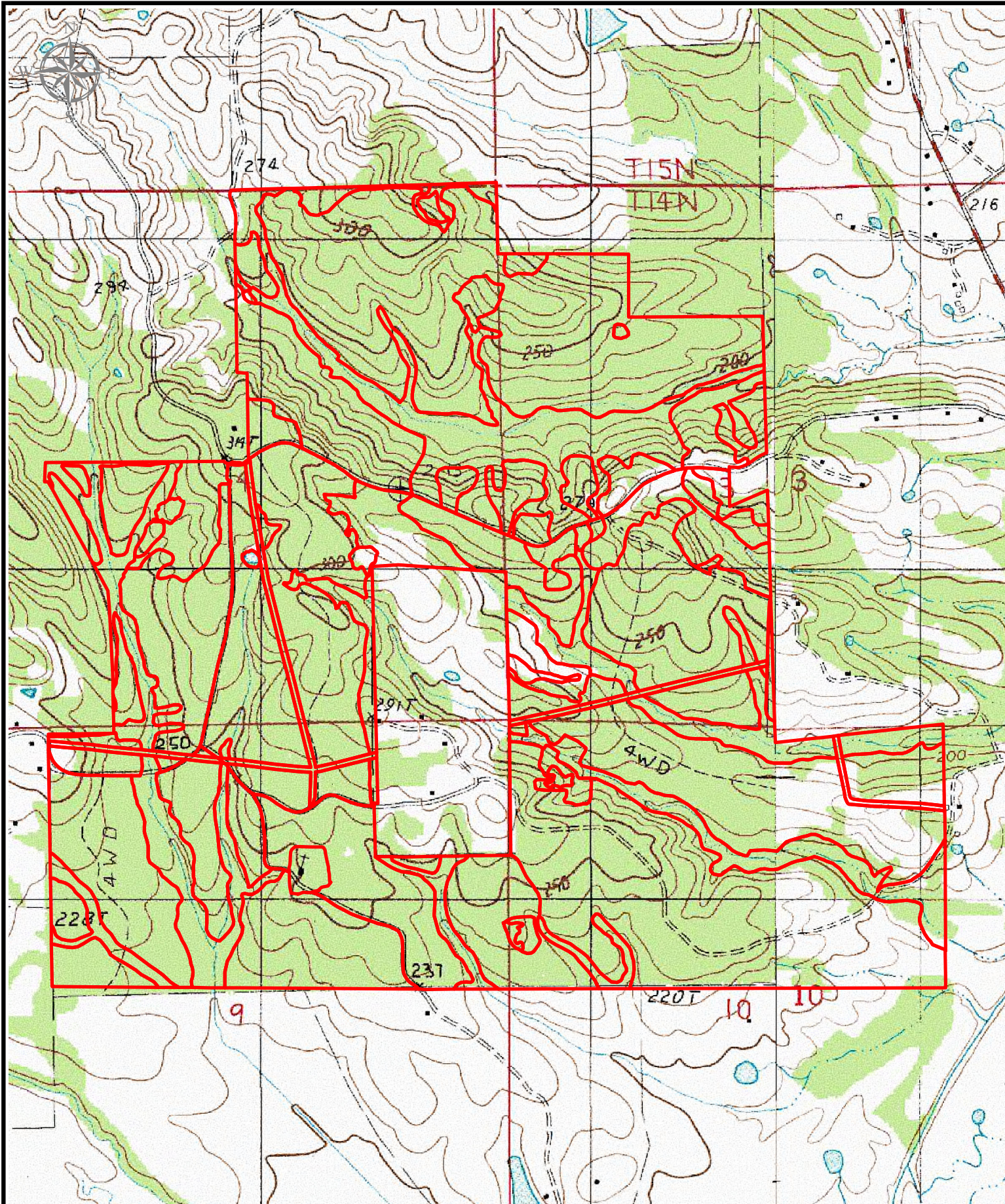
1,320 660 0 Feet

Rudolph Road Tract
1,109+- Acres
Lowndes County, AL

July 29, 2020

Map is for illustrative purposes only. Accuracy is neither warranted nor guaranteed.

Larson & McGowin
PROPERTIES



1,320 660 0 Feet

Rudolph Road Tract
1,109+- Acres
Lowndes County, AL

July 29, 2020

Map is for illustrative purposes only. Accuracy is neither warranted nor guaranteed.

Larson & McGowin
PROPERTIES