

USDA, USGS The National Map: Orthoimagery. Data refreshed June, 2024.

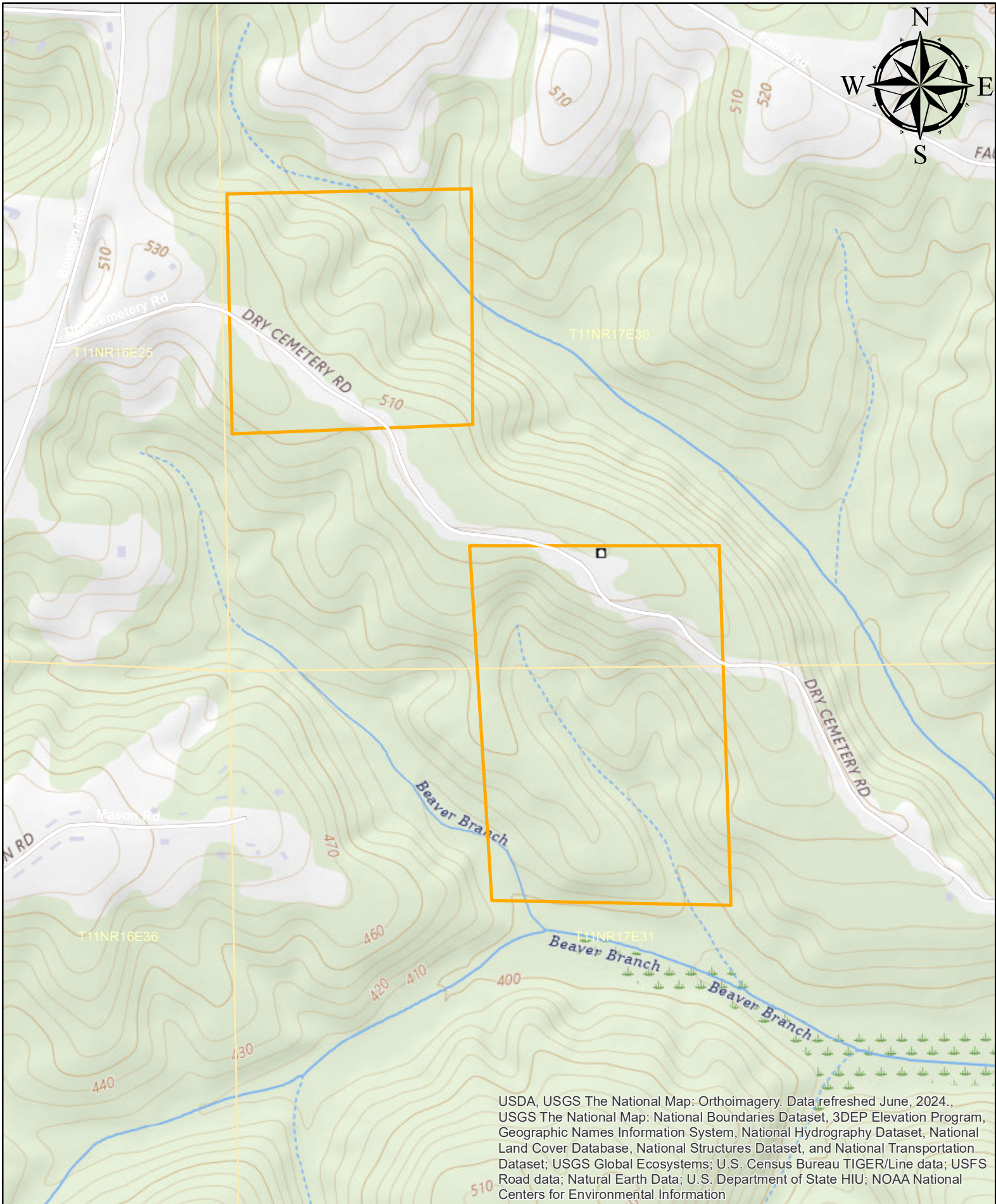
0 660 1,320 Feet

**The Mason Place**  
**101+- Acres**  
**Crenshaw County, AL**

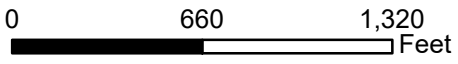
**Larson & McGowin**  
PROPERTIES

Map is for illustrative purposes. Accuracy is neither warranted nor guaranteed.





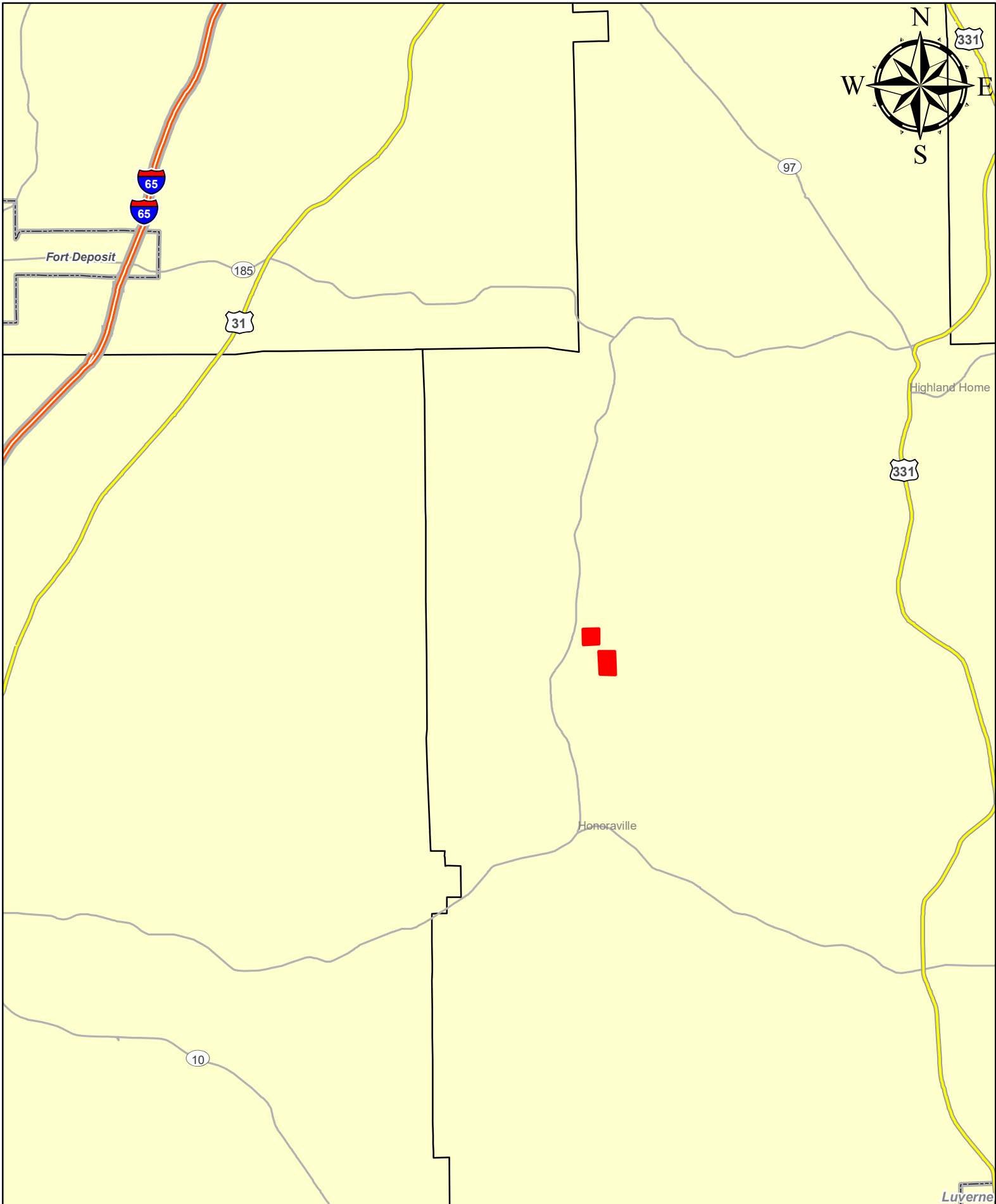
USDA, USGS The National Map: Orthoimagery, Data refreshed June, 2024.,  
 USGS The National Map: National Boundaries Dataset, 3DEP Elevation Program,  
 Geographic Names Information System, National Hydrography Dataset, National  
 Land Cover Database, National Structures Dataset, and National Transportation  
 Dataset; USGS Global Ecosystems; U.S. Census Bureau TIGER/Line data; USFS  
 Road data; Natural Earth Data; U.S. Department of State HIU; NOAA National  
 Centers for Environmental Information



**The Mason Place**  
**101+- Acres**  
**Crenshaw County, AL**



Map is for illustrative purposes. Accuracy is neither warranted nor guaranteed.



0 1 2 Miles

**The Mason Place**  
101+- Acres  
Crenshaw County, AL

Map is for illustrative purposes. Accuracy is neither warranted nor guaranteed.

**Larson & McGowin**  
PROPERTIES