



Larson &  
McGowin  
PROPERTIES

# LOCK 17 ROAD TRACT

268± Acres In Tuscaloosa County, Alabama  
**\$415,400**

The Lock 17 tract is approximately 268± acres of pine and hardwood hills in Tuscaloosa County. Just off of Watermelon Road this tract offers a peaceful setting along the Black Warrior basin. Good balance of forest land and open well pads and a power line make for great habitat for the plentiful wildlife.

Offered at \$415,400.



**Chandler  
Graham**  
Qualifying Broker

cgraham@larsonmcgowin.com  
Phone: 205.977.7706 | Mobile: 334.734.1382

[www.larsonmcgowinproperties.com](http://www.larsonmcgowinproperties.com)

500 Office Park Drive, Suite 430 Birmingham, AL 35223 | Branch Offices: Greenville, Alabama | Mobile, Alabama | Merryville, Louisiana  
Licensed in AL, MS, TN, LA, TX, AR, GA, KY, FL, & SC



Larson &  
McGowin  
PROPERTIES

# LOCK 17 ROAD TRACT

268± Acres In Tuscaloosa County, Alabama  
\$415,400



Larson &  
McGowin  
PROPERTIES

Chandler  
Graham  
Qualifying Broker

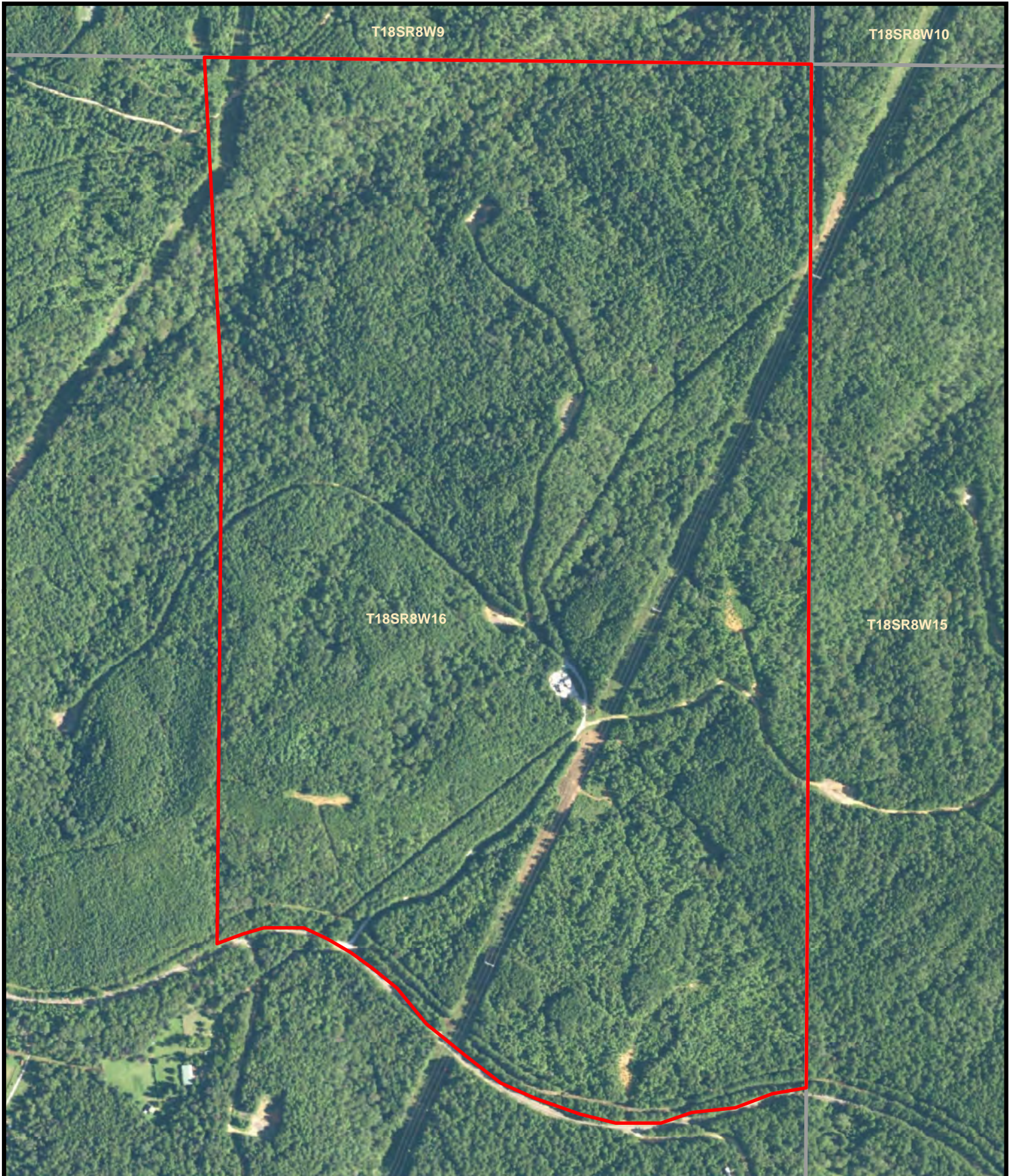
cgraham@larsonmcgowin.com  
Phone: 205.977.7706 | Mobile: 334.734.1382

[www.larsonmcgowinproperties.com](http://www.larsonmcgowinproperties.com)

500 Office Park Drive, Suite 430 Birmingham, AL 35223 | Branch Offices: Greenville, Alabama | Mobile, Alabama | Merryville, Louisiana  
Licensed in AL, MS, TN, LA, TX, AR, GA, KY, FL, & SC

Lock 17 Tract  
268+- Acres

S16 T18S R8W  
268+- Acres



 Lock 17 shp

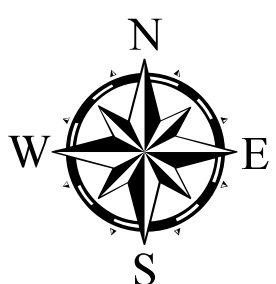
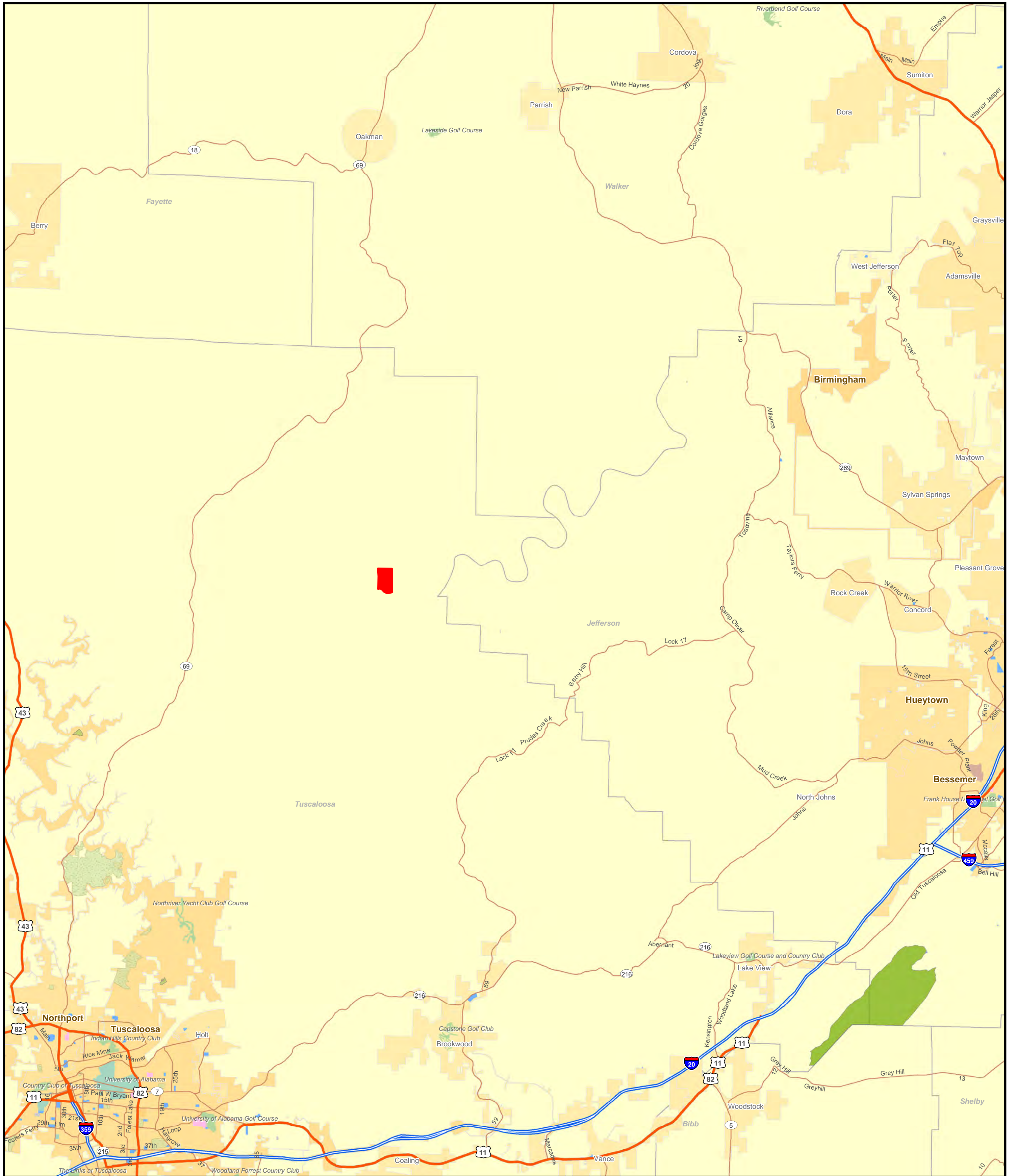
0 345 690 1,380 Feet

Map is for illustration purposes only. Accuracy is neither guaranteed nor warranted for accuracy.

Larson &  
McGowin  
PROPERTIES

# Lock 17

# Tuscaloosa County, Al



0 2.75 5.5 11 Miles

Larson & McGowin PROPERTIES

Map is for illustration purposes only. Accuracy is neither guaranteed nor warranted for accuracy.

