

Larson &
McGowin
P R O P E R T I E S

Hatter North NEW TRACT

662± Acres In
Mobile County, Alabama
\$2,648,000



TIMBERLAND | HUNTING | INVESTMENT PROPERTY

The Hatter Tract is located just minutes from downtown Mobile and the fast developing commercial area of Saraland. Minutes from the fast developing commercial area of Saraland at the I-65 interchange which includes a Publix, Infirmary Health's new and expanding medical facility, restaurants, motels and shopping. Saraland has excellent real estate prospects, a quality school district, good infrastructure, low crime and new construction of higher value homes and subdivisions. The property has been held by the same ownership and professionally managed as timberland by Larson & McGowin, LLC for over 50 years. Longleaf pine covers the majority of the land. Some areas are recently planted loblolly pine. There is abundant wildlife including deer, turkey and bear. Clear flowing Sawmill Creek runs along the property line for over a mile. It is currently leased to an active, conscientious hunting club. Beautiful scenic views are afforded from many locations including some of the first high points west of the Mobile Delta. Offered at \$2,648,000

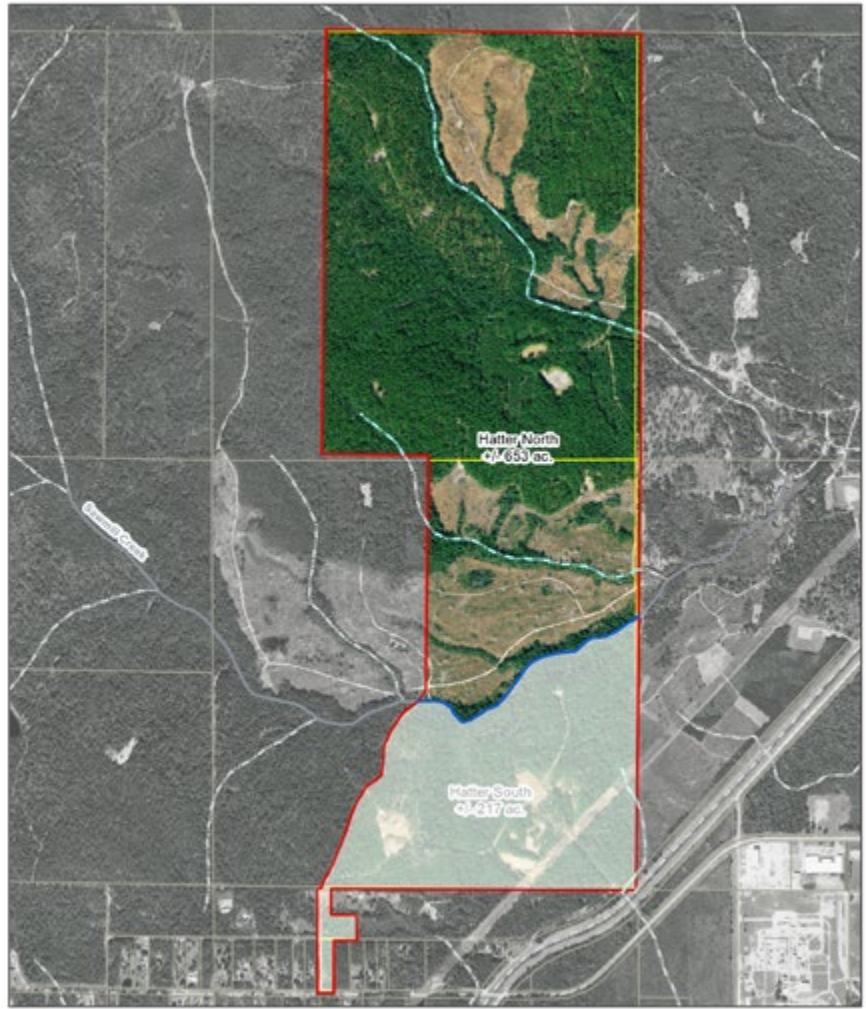
Larson &
McGowin
PROPERTIES

Hatter North NEW TRACT

662± Acres In
Mobile County, Alabama
\$2,648,000



Well Stocked with Longleaf Pine
Good Hunting/Recreational Use
Profitable, Permitted



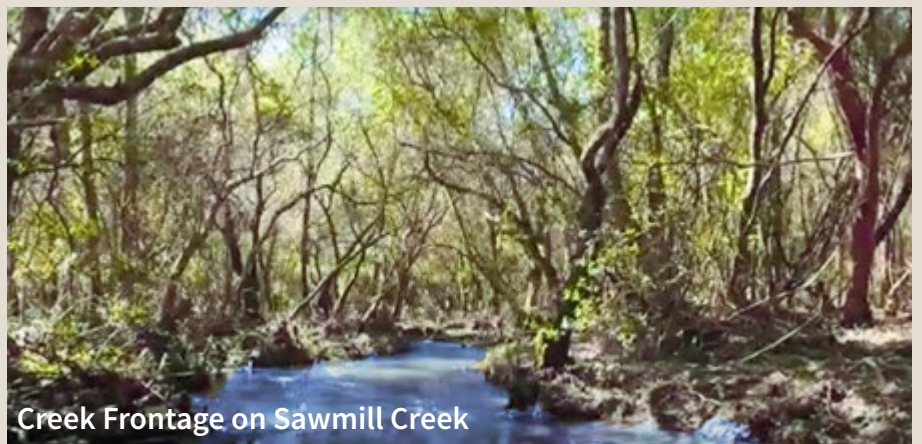
Hatter Tract
T 15, R 1W, Section 33
T 2S, R 1W, Section 4 & 9
Mobile County, AL

0 0.125 0.25 0.5 1 Miles

Map is for reference purposes only. Data cannot be guaranteed nor warranted by LRP Properties. Imagery 2019



Larson &
McGowin
PROPERTIES



Creek Frontage on Sawmill Creek

Larson &
McGowin
PROPERTIES

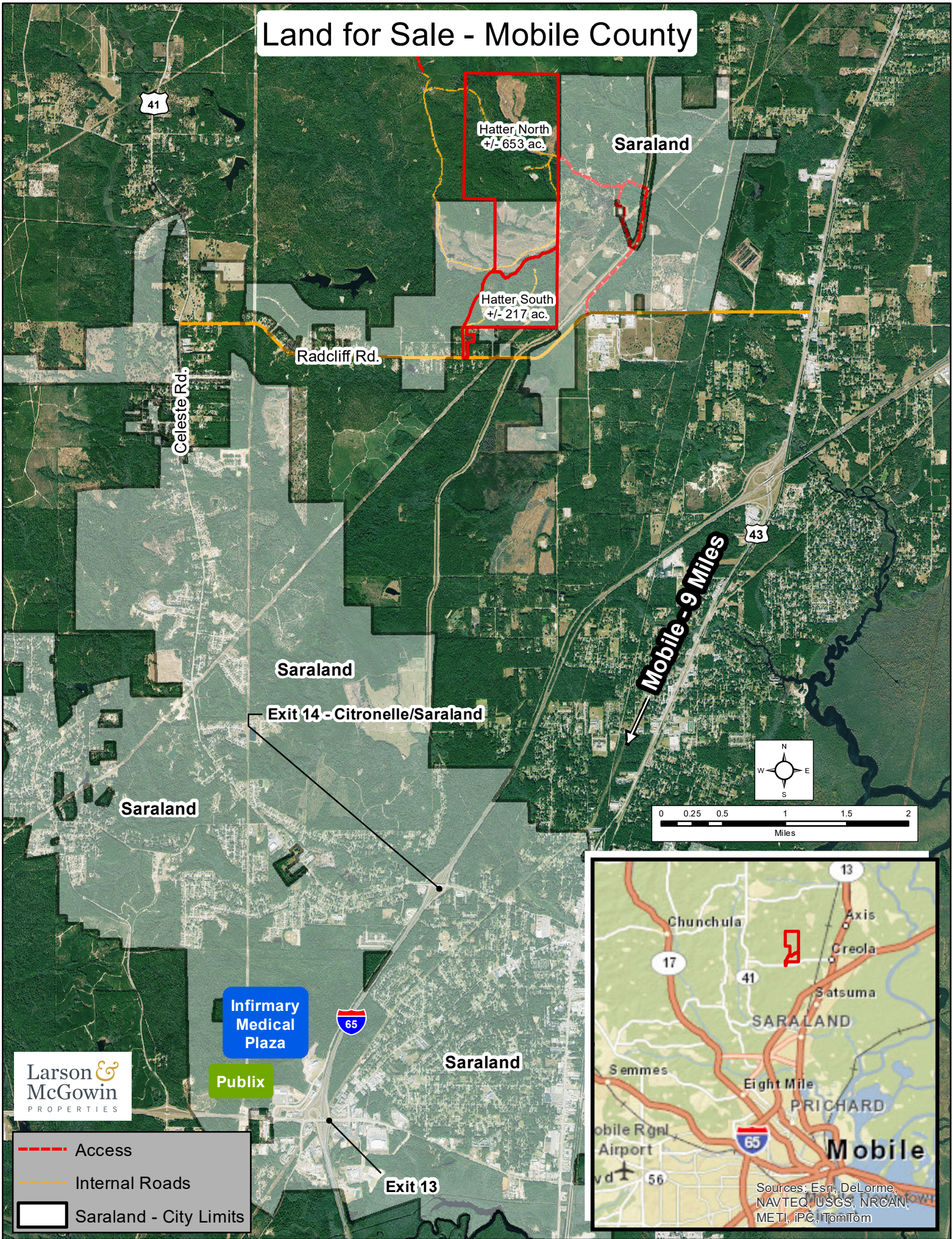
Jessica L.
Little
Qualifying Broker

jlittle@larsonmcgowin.com
Office: 251.273.6674 | Mobile: 251.604.7768

www.larsonmcgowinproperties.com

10 N. Florida Street, Mobile, AL 36652 | Branch Offices: Greenville, Alabama | Mobile, Alabama | Merryville, Louisiana
Licensed in AL, MS, TN, LA, TX, AR, GA, KY, FL, & SC

Land for Sale - Mobile County



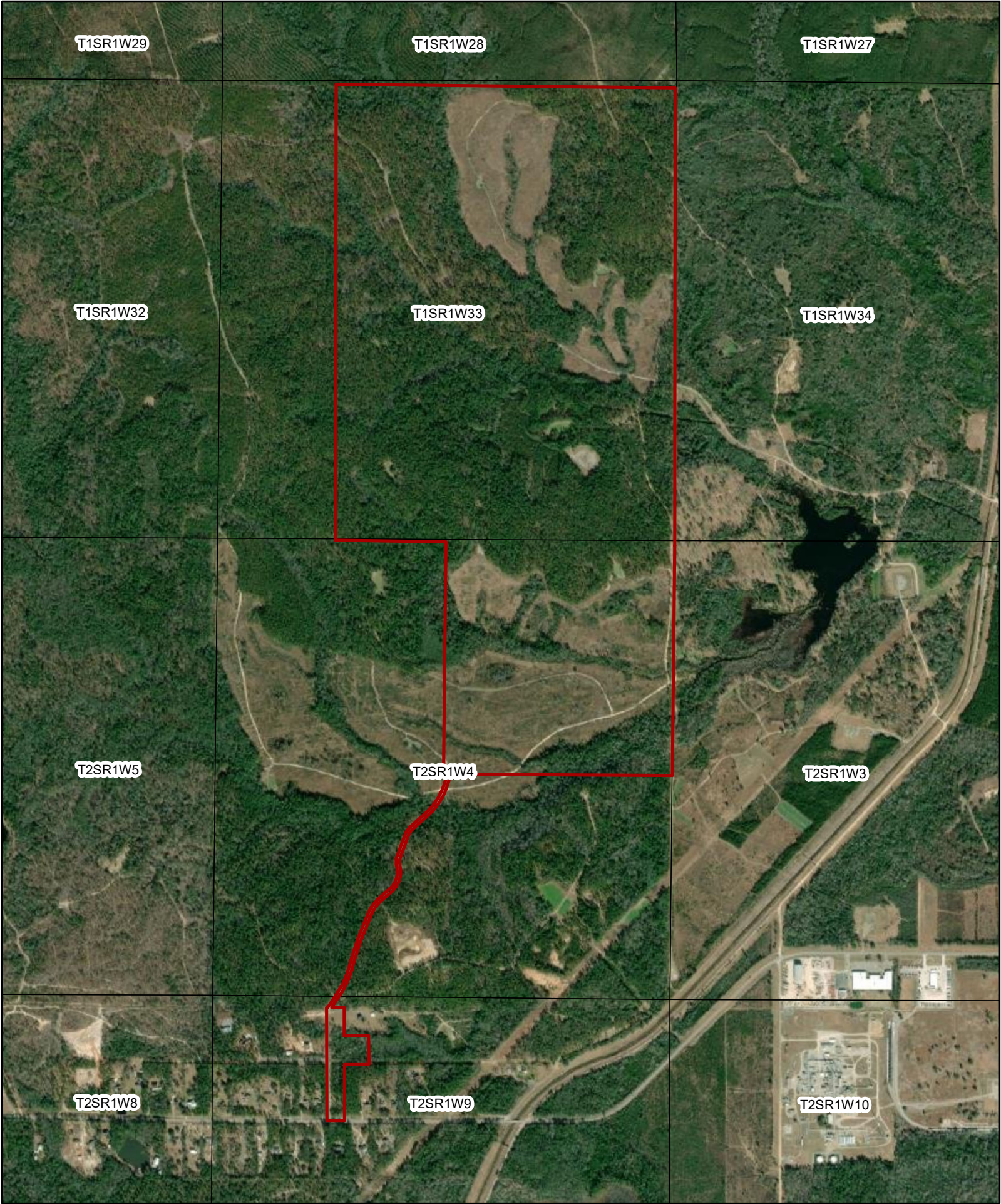
Larson & McGowin
PROPERTIES

- Access
- Internal Roads
- Saraland - City Limits

Hatter Tract

Mobile County, AL

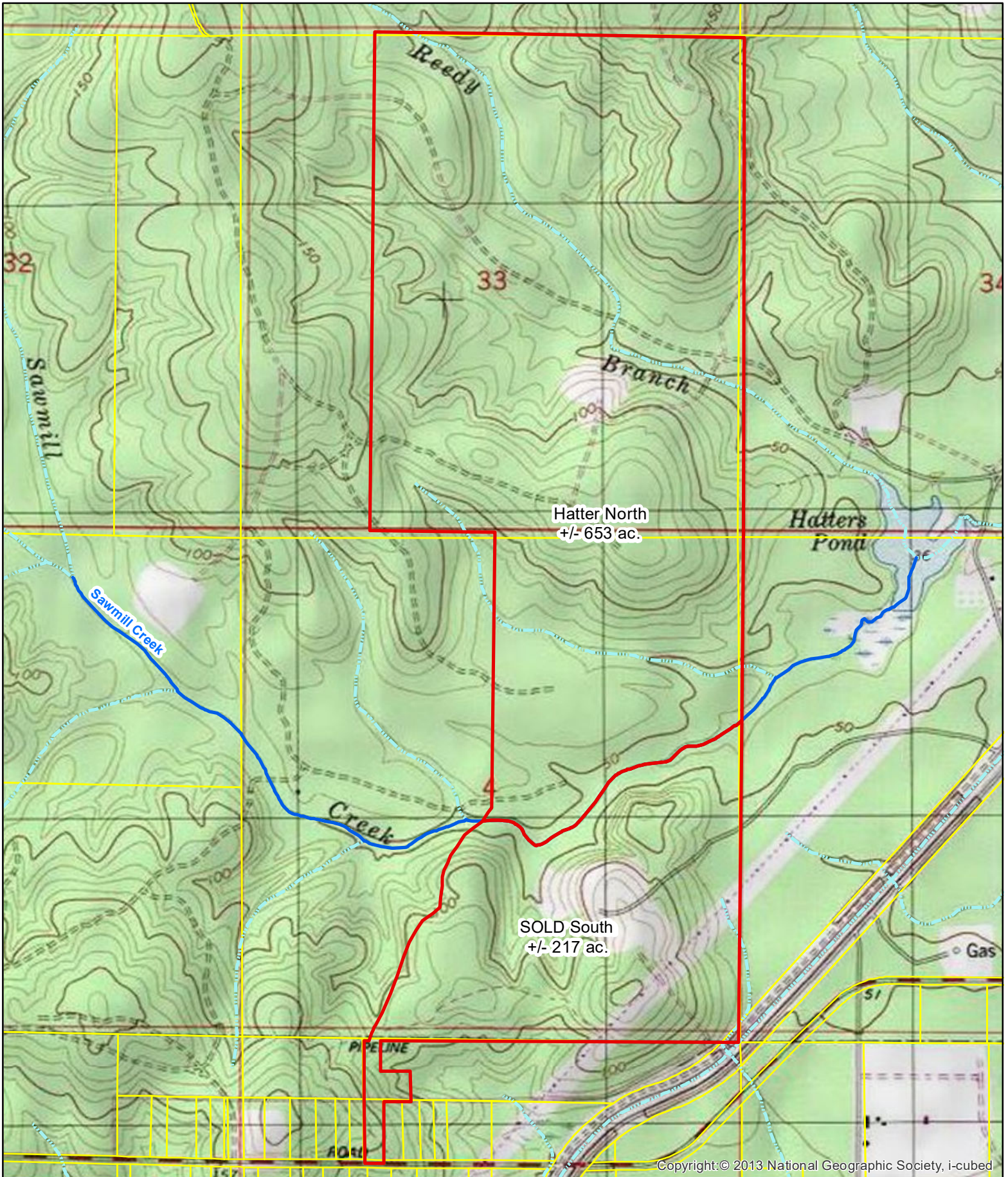
+/- 662 acres



 Hatter Tract

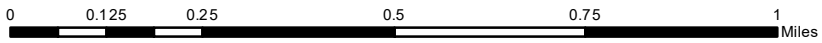
0 0.075 0.15 0.3 0.45 0.6 Miles
Map is for reference purposes only. Data cannot be guaranteed nor warranted by L&M





Copyright: © 2013 National Geographic Society, i-cubed

Hatter Tract
T 1S, R1W, Section 33
T2S, R1W, Section 4 & 9
Mobile County, AL



Map is for reference purposes only. Data cannot be guaranteed nor warranted by LM Properties.



Larson & McGowin
PROPERTIES