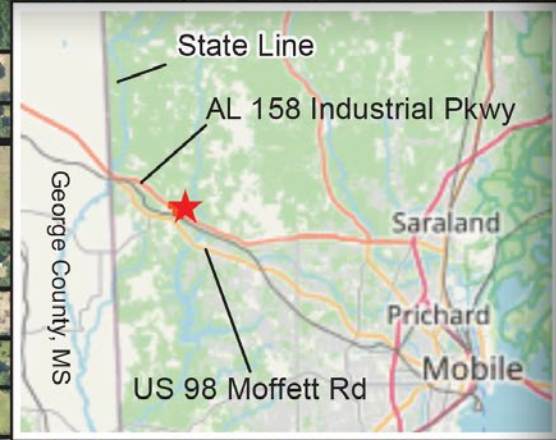




# Georgetown Development Tract

73± ACRES IN MOBILE COUNTY, ALABAMA  
\$927,000

DEVELOPMENT OPPORTUNITY  
RESIDENTIAL  
COMMERCIAL  
INDUSTRIAL





TIMBERLAND

DEVELOPMENT  
OPPORTUNITY  
RESIDENTIAL  
COMMERCIAL  
INDUSTRIAL

# Property Highlights:

## Property Overview:

**Location:** Intersection of County Road 63 & Alabama Highway 158 (to Mississippi) Just south of Wilmer Elementary School

**Size:** Approx. 73 acres

**Type:** Timberland, Development Opportunity, Residential, Commercial and Industrial.

**Access Points:** Two access points County Road 63 and paved Danner Road

**Included Features:** Timber, road frontage

**Condition:** Property is being sold AS IS.

## Key Features:

- **Convenient Access:**

Quick access to Highway 158, providing easy routes to I-65 at Saraland and Mississippi.

- **Development Opportunity:**

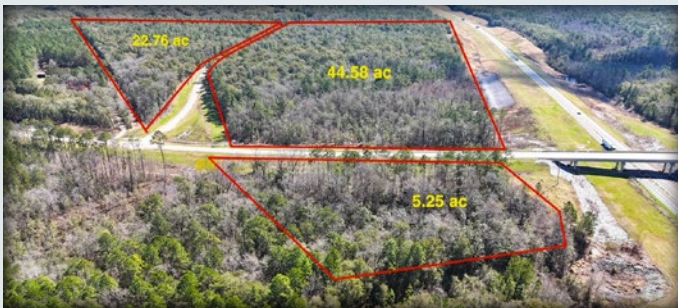
With access from both County Road 63 and Danner Road, both paved, the land offers flexibility for development.

## Property Details:

- Approx. 73 Acres or Separate Parcels
- Ideal for residential, commercial, or industrial development
- Ideal for commercial sites with 1/10 mile road frontage on both sides of county Road 63.

## Directions:

- Head west on Moffett Rd: turn right on County Road 63. Once you cross over AL 158, property is on the right. Turn right on Danner Road and land on both sides is included.
- From I-65 at Saraland, take AL Highway 158 west to County Road 63.



# Georgetown Development Tract

73± ACRES IN MOBILE COUNTY, ALABAMA

\$927,000

## Don't Miss Out on This Exceptional Opportunity!

Whether you're looking to develop, build home sites or enjoy recreational activities, this land is a rare find with limitless possibilities. Contact us today for more details or to schedule a viewing!



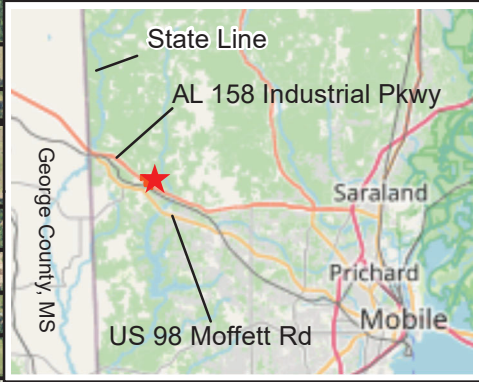
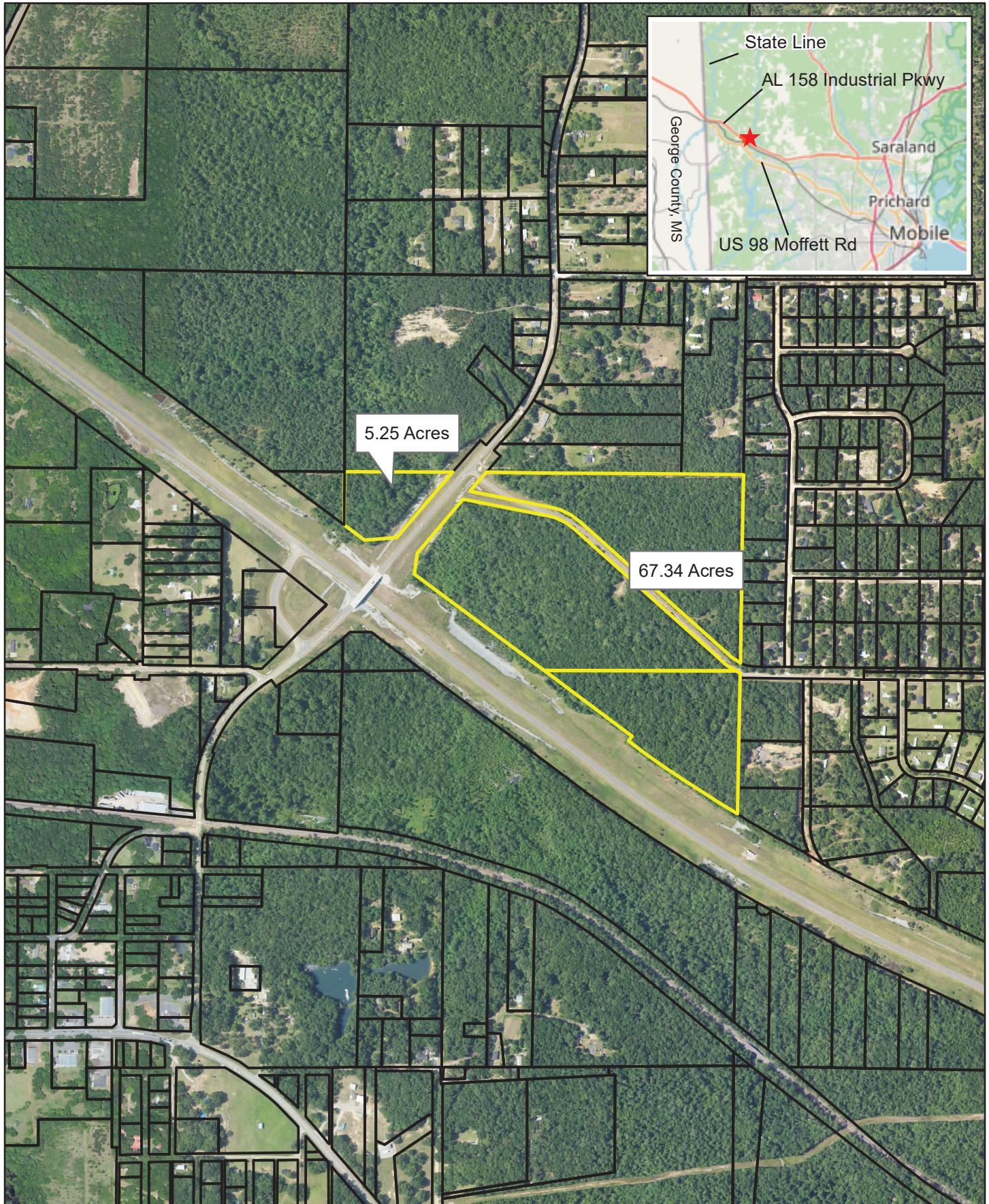
**Jessica L. Little**  
Qualifying Broker  
10 N. Florida Street, Mobile, AL 36652

[jlittle@larsonmcgowin.com](mailto:jlittle@larsonmcgowin.com)  
Office: 251.273.6674 | Mobile: 251.604.7768  
[www.larsonmcgowinproperties.com](http://www.larsonmcgowinproperties.com)

Branch Offices: Greenville, Alabama | Mobile, Alabama | Merryville, Louisiana  
Licensed in AL, MS, TN, LA, TX, AR, GA, KY, FL, & SC

# Wilmer Tract

+/- 73 Acres  
Mobile, AL

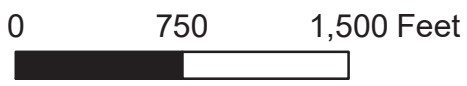


5.25 Acres

67.34 Acres



Other Parcels    Tract 3  
Tract 2



Map is for reference purposes only. Data in map cannot be guaranteed nor warranted by L&M.

