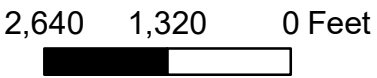


Legend

GMO_Stands_with_Inventory

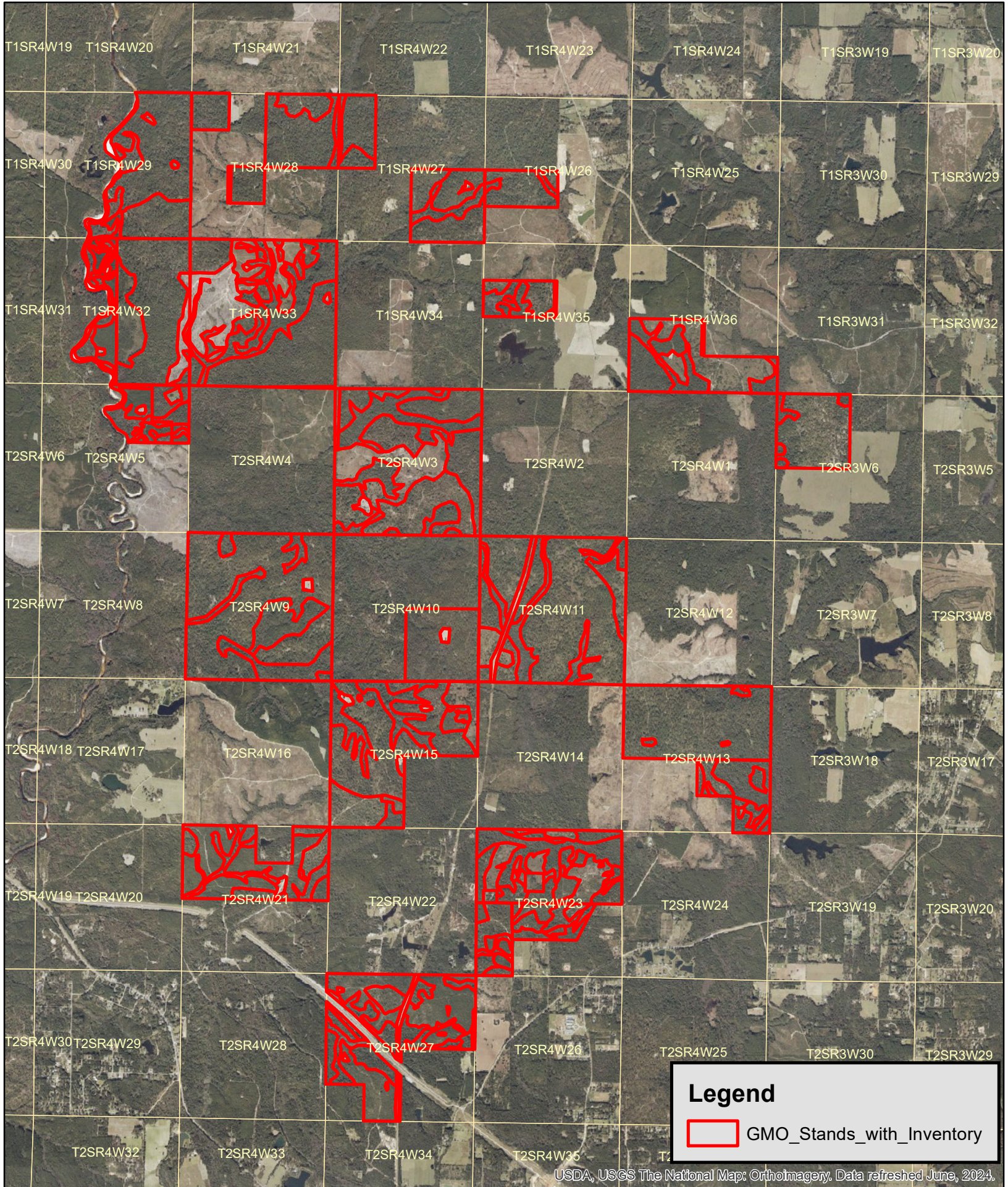
USDA, USGS The National Map: Orthoimagery, Data refreshed June, 2024.



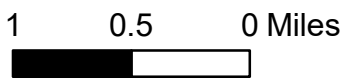
GM&O Timberlands
6,957+- Acres
Mobile County, AL



Map is for illustrative purposes only. Accuracy is not guaranteed



USDA, USGS The National Map: Orthoimagery. Data refreshed June, 2024.



GM&O Timberlands
6,957+- Acres
Mobile County, AL



Map is for illustrative purposes only. Accuracy is not guaranteed