



# DeSoto Timberlands

3,361± ACRES | JACKSON COUNTY, MISSISSIPPI

**D**eSoto Timberlands presents the opportunity to acquire a large-scale timberland investment with long-term land banking and transitional potential. Spanning approximately 3,361± acres in Jackson County, this property has been professionally managed for timber production for decades, offering a well-balanced mix of young pine plantations and mature timber stands

Strategically located within a strong and stable timber market, the tract benefits from excellent access to regional mills and end users, supporting consistent income potential and operational efficiency.



500 Office Park Drive Suite 430  
Birmingham, AL 35223

**Chandler Graham** | Qualifying Broker

Phone: 205.977.7706 | Mobile: 334.734.1382  
cgraham@larsonmcgowin.com

Branch Offices: Greenville, Alabama  
Mobile, Alabama | Merryville, Louisiana

Licensed in AL, MS, TN, LA, TX, AR, GA, KY, FL, NC & SC

[www.larsonmcgowinproperties.com](http://www.larsonmcgowinproperties.com)

# DeSoto Timberlands

3,361± ACRES | JACKSON COUNTY, MISSISSIPPI



Positioned just 30 minutes from Biloxi, the property also lies in the path of growth, with expanding residential development nearby. This creates a compelling opportunity for future appreciation and potential conversion to higher and better uses.

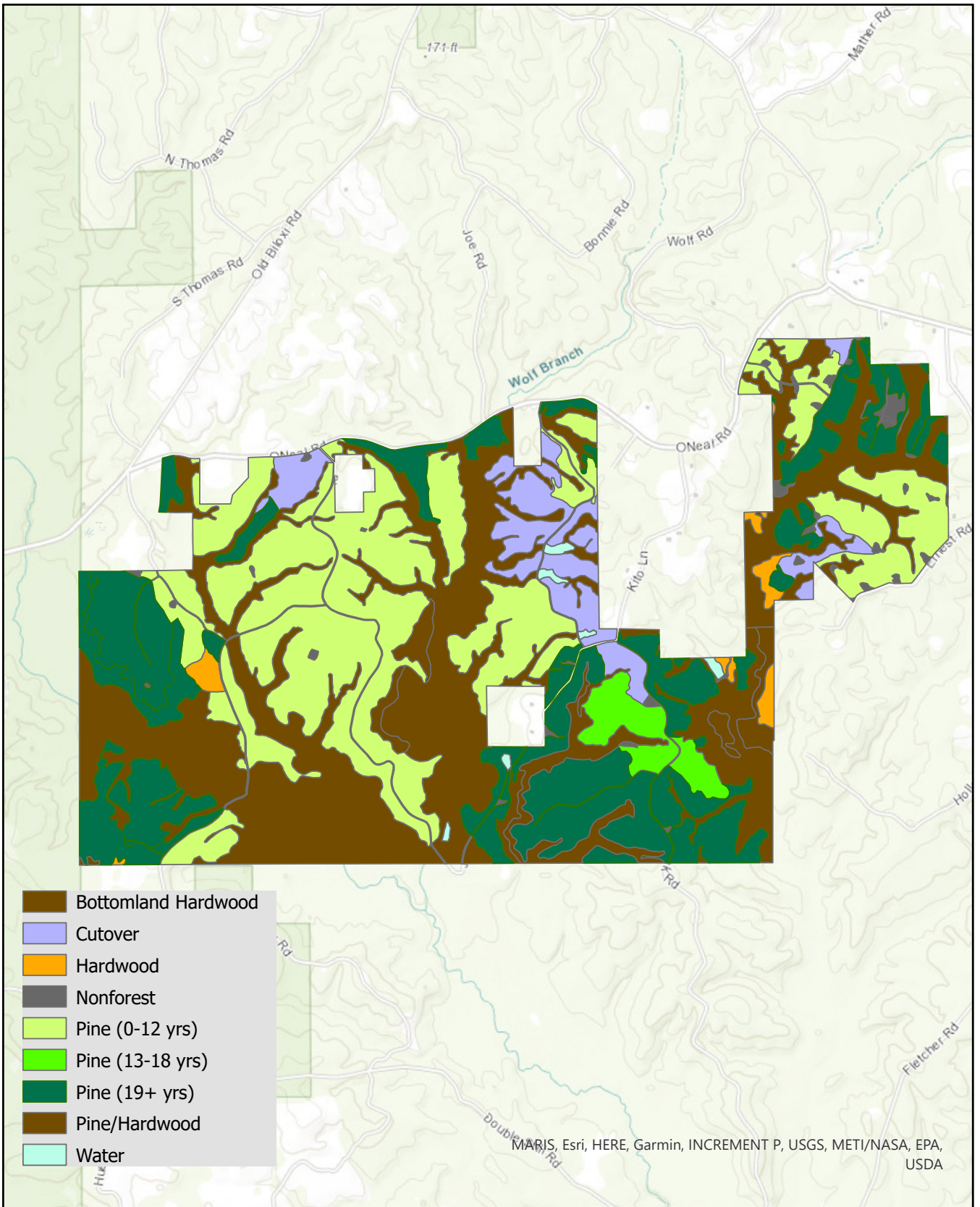
With ample frontage along multiple county roads, DeSoto Timberlands offers exceptional flexibility for subdivision, recreational use, or future development.



# DeSoto Timberlands

3,361± ACRES

JACKSON COUNTY,  
MISSISSIPPI

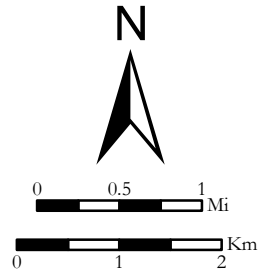


## Desoto Timberlands

3,361± Acres  
Jackson County, Mississippi  
T5S-R8W



Coordinate System: WGS 1984 Web Mercator Auxiliary Sphere

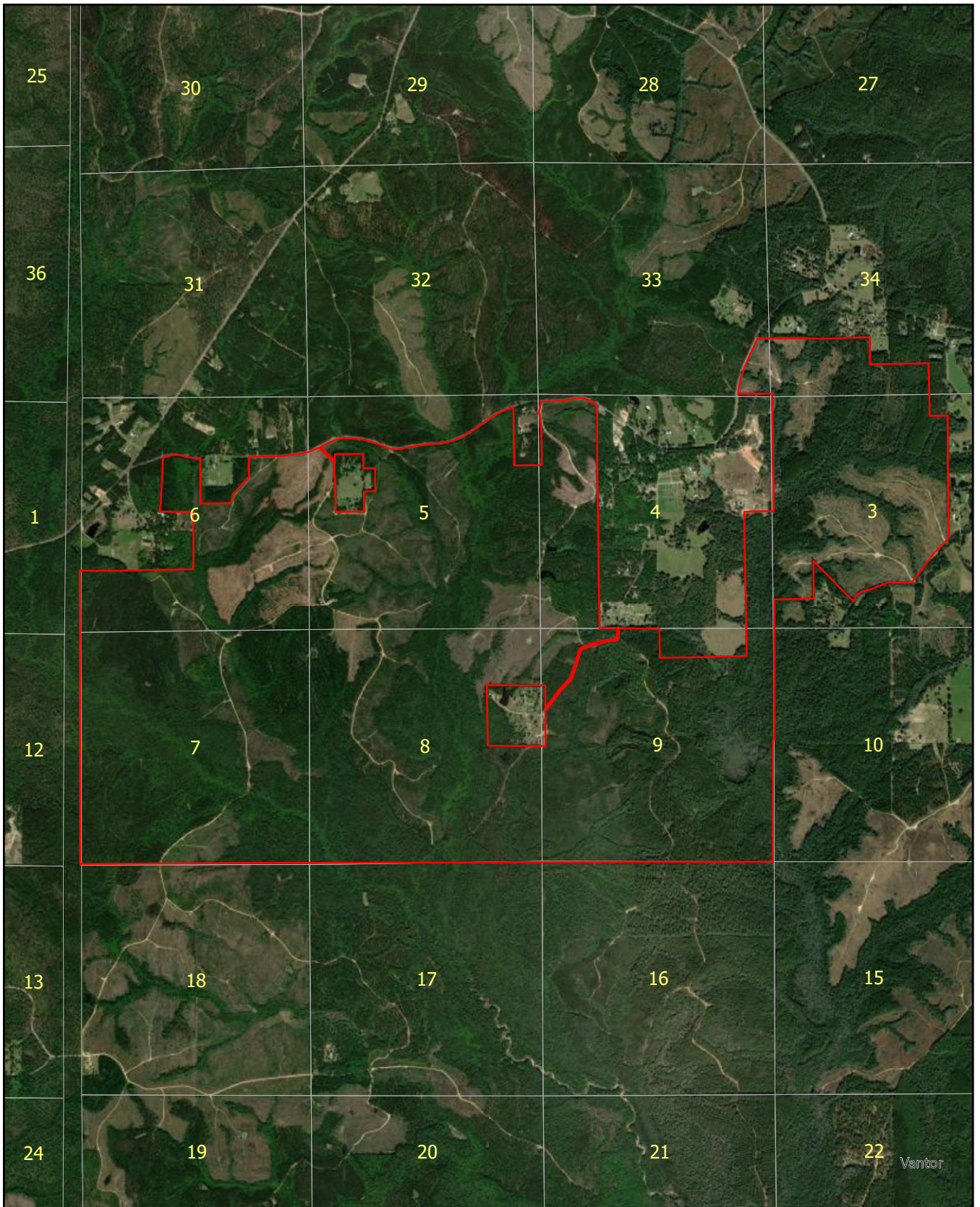




# DeSoto Timberlands

3,361± ACRES

JACKSON COUNTY,  
MISSISSIPPI

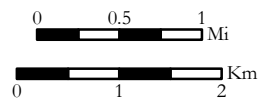


## Desoto Timberlands

3,361± Acres  
Jackson County, Mississippi  
T5S-R8W



Coordinate System: WGS 1984 Web Mercator Auxiliary Sphere

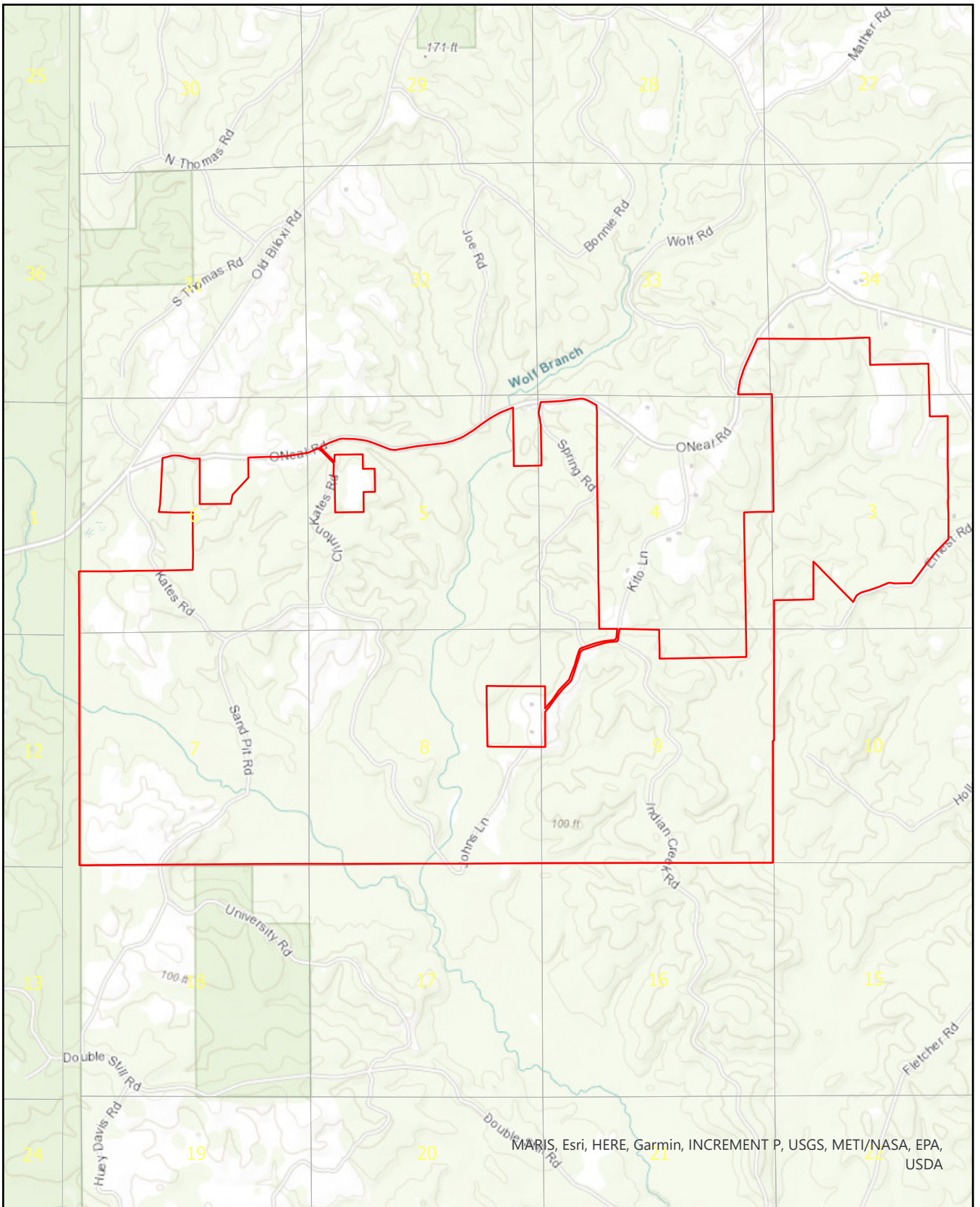




# DeSoto Timberlands

3,361± ACRES

JACKSON COUNTY,  
MISSISSIPPI



MARIS, Esri, HERE, Garmin, INCREMENT P, USGS, METI/NASA, EPA, USDA

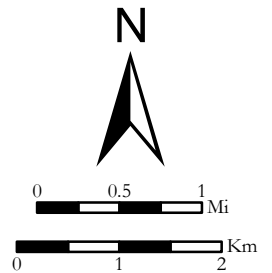


## Desoto Timberlands

3,361± Acres  
Jackson County, Mississippi  
T5S-R8W



Coordinate System: WGS 1984 Web Mercator Auxiliary Sphere

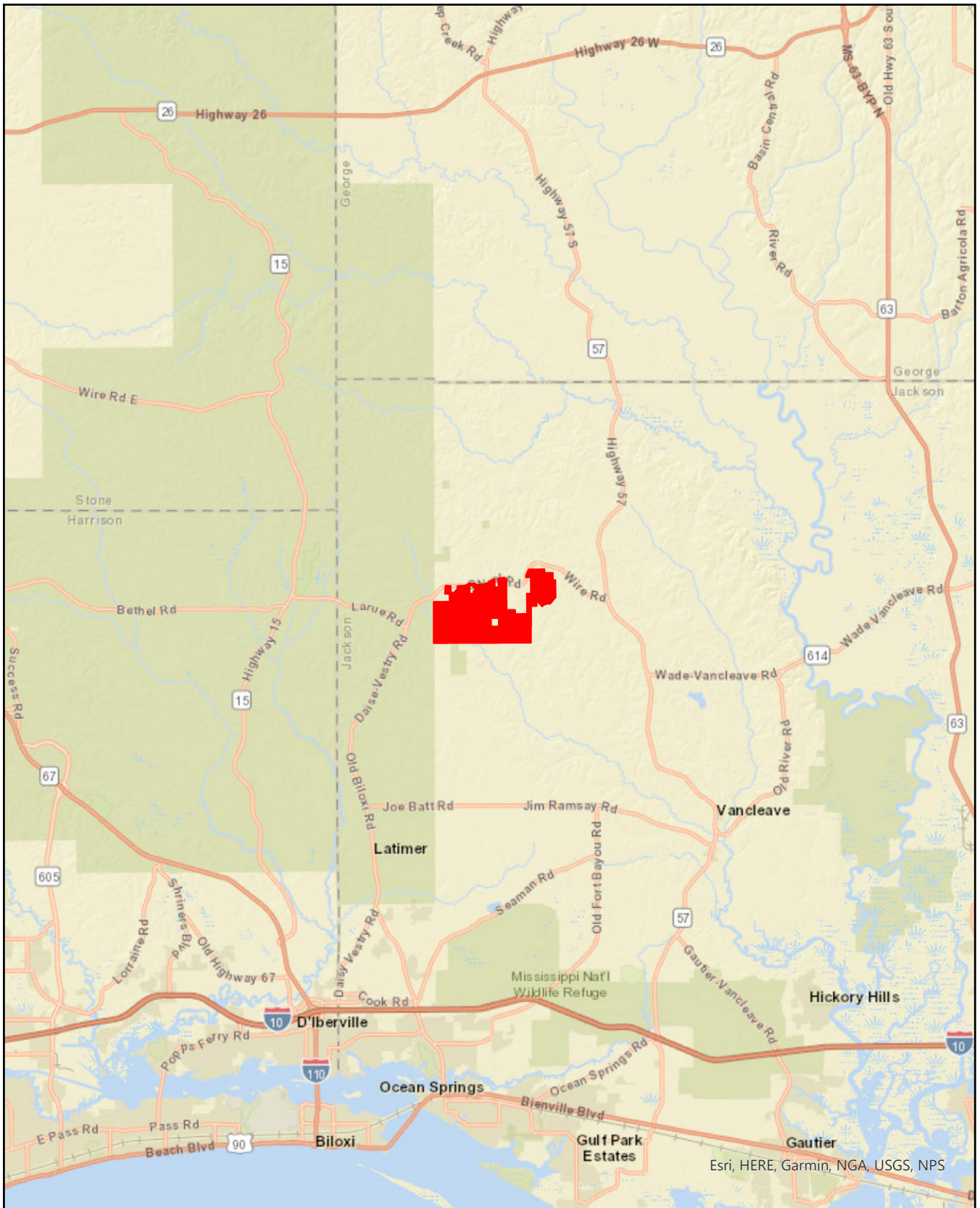




# DeSoto Timberlands

3,361± ACRES

JACKSON COUNTY,  
MISSISSIPPI

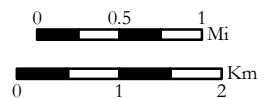


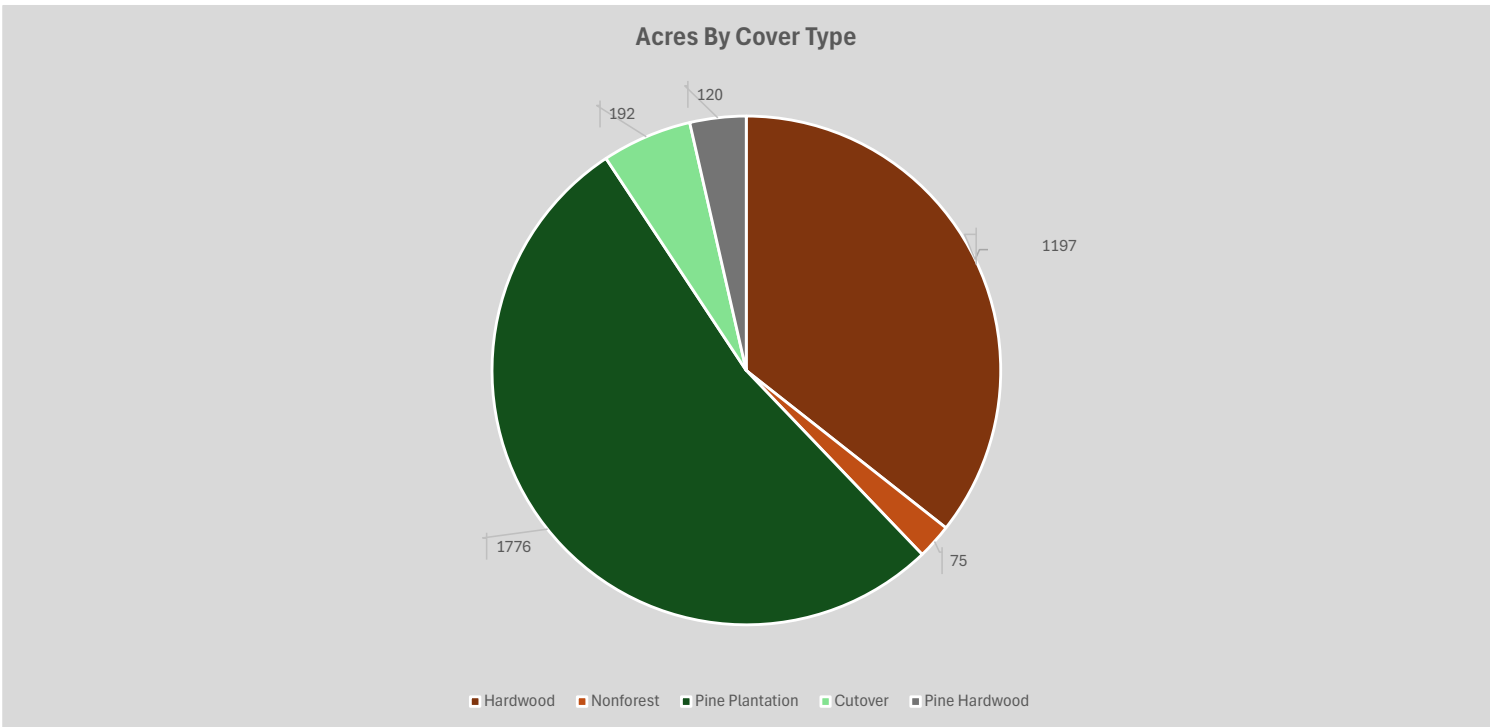
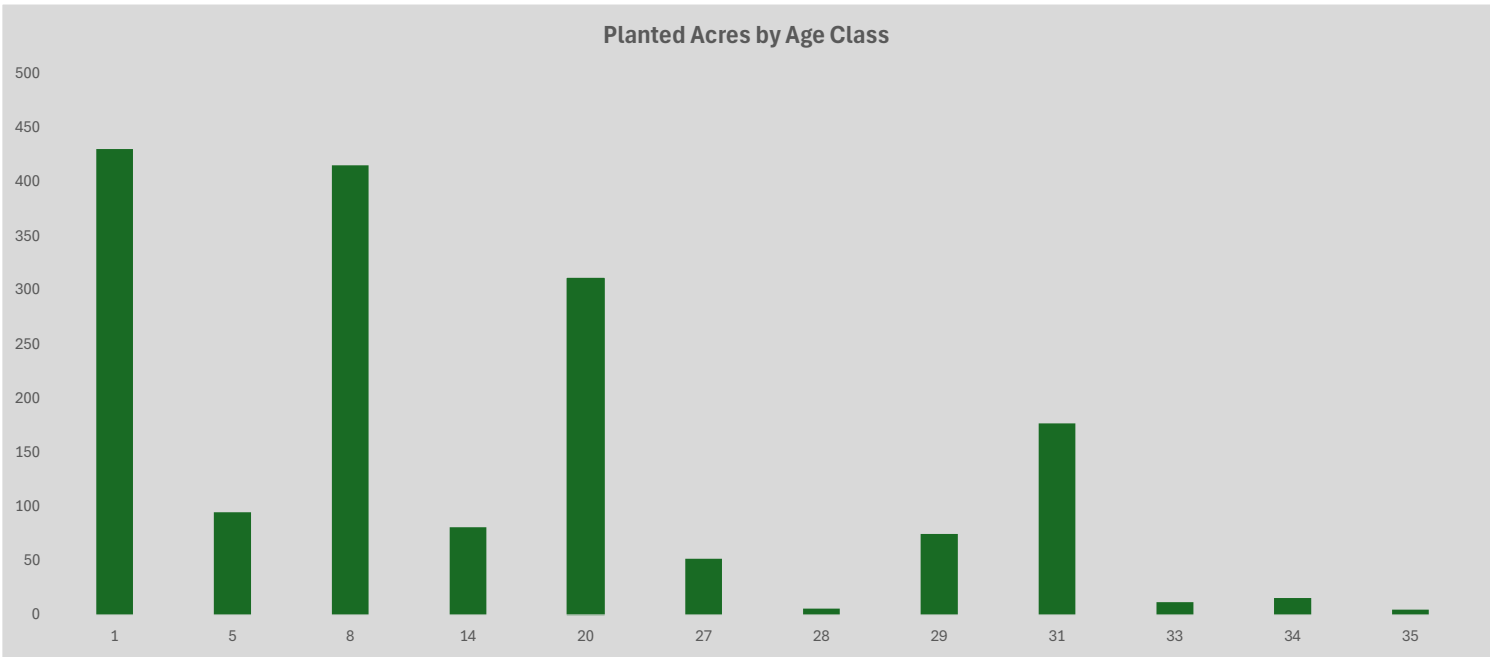
## DeSoto Timberlands

3,361± Acres  
Jackson County, Mississippi



Coordinate System: WGS 1984 Web Mercator Auxiliary Sphere





**Larson & McGowin**  
PROPERTIES

500 Office Park Drive Suite 430  
Birmingham, AL 35223

**Chandler Graham** | Qualifying Broker

Phone: 205.977.7706 | Mobile: 334.734.1382  
cgraham@larsonmcgowin.com

Branch Offices: Greenville, Alabama  
Mobile, Alabama | Merryville, Louisiana

Licensed in AL, MS, TN, LA, TX, AR, GA, KY, FL, NC & SC

[www.larsonmcgowinproperties.com](http://www.larsonmcgowinproperties.com)