

Larson &
McGowin
PROPERTIES

Boardtree Creek TRACT

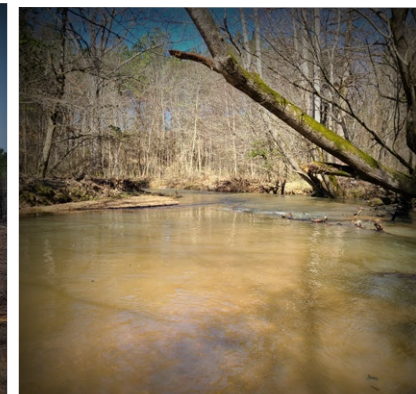
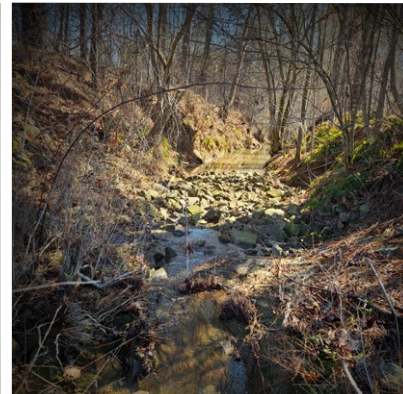
463± Acres Marion County, Alabama



NORTH



SOUTH



Offered in its entirety or as two tracts the Boardtree Tract is located just minutes from I-22 and the city of Hamilton in Marion County. The property was replanted in February of 2021 with Loblolly pine. The topography is gently rolling offering enough terrain to provide great view sheds without compromising utilization of the tract. The south parcel has frontage on beautiful Boardtree Creek offering year-round water. A paved county road provides access to both parcels.

Boardtree North 254± Acres **SOLD**

Boardtree South 209± Acres \$256,025



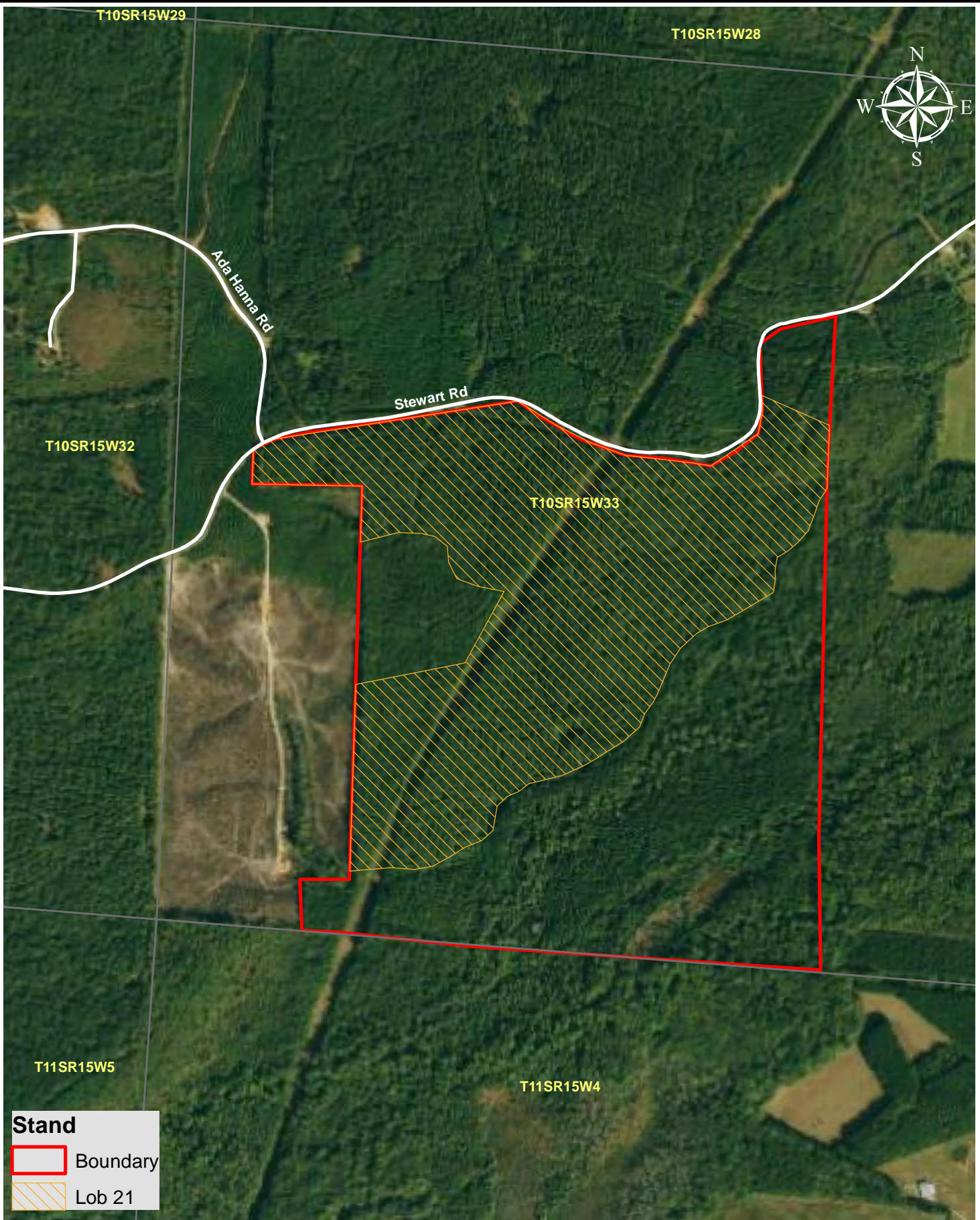
Chandler
Graham
Qualifying Broker

cgraham@larsonmcgowin.com

Phone: 205.977.7706 | Mobile: 334.734.1382

www.larsonmcgowinproperties.com

500 Office Park Drive Suite 430 Birmingham, AL 35223 | Branch Offices: Greenville, Alabama | Mobile, Alabama | Merryville, Louisiana
Licensed in AL, MS, TN, LA, TX, AR, GA, KY, FL, & SC



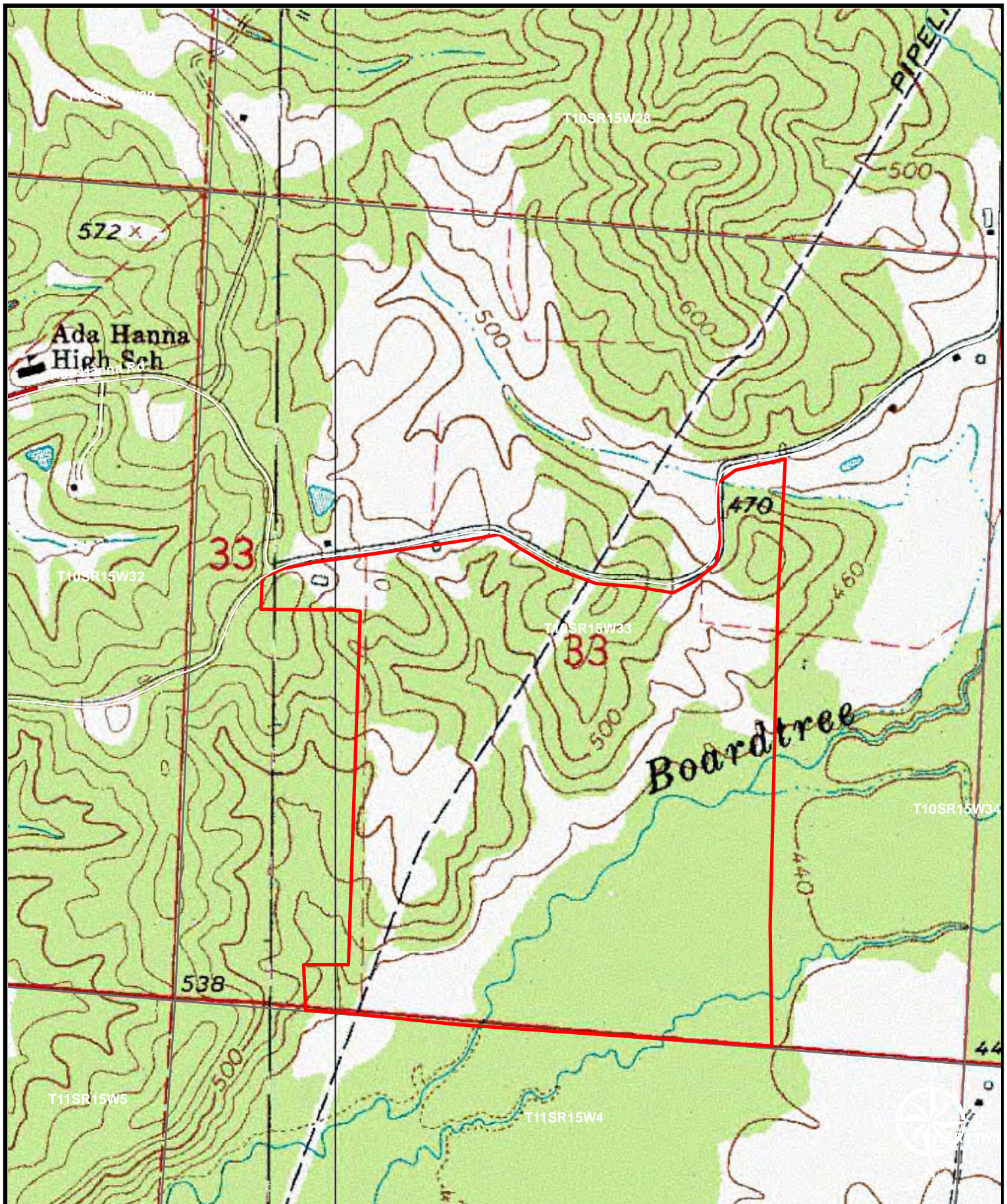
1,320 660 0 Feet

Boardtree Creek South
209+ Acres
Marion County, AL

Map is for illustrative purposes only. Accuracy is neither warranted nor guaranteed.

February 12, 2021

Larson &
McGowin
PROPERTIES



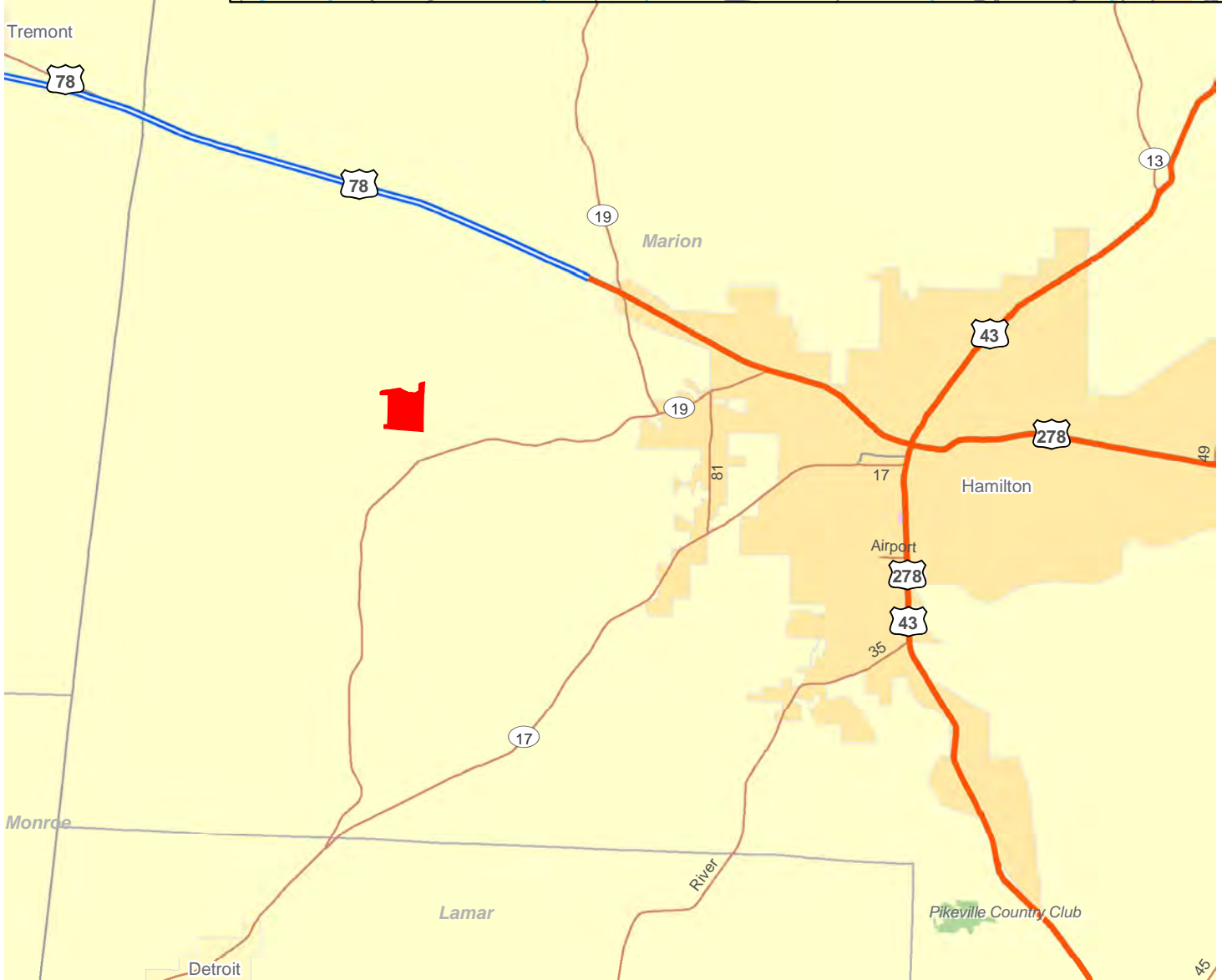
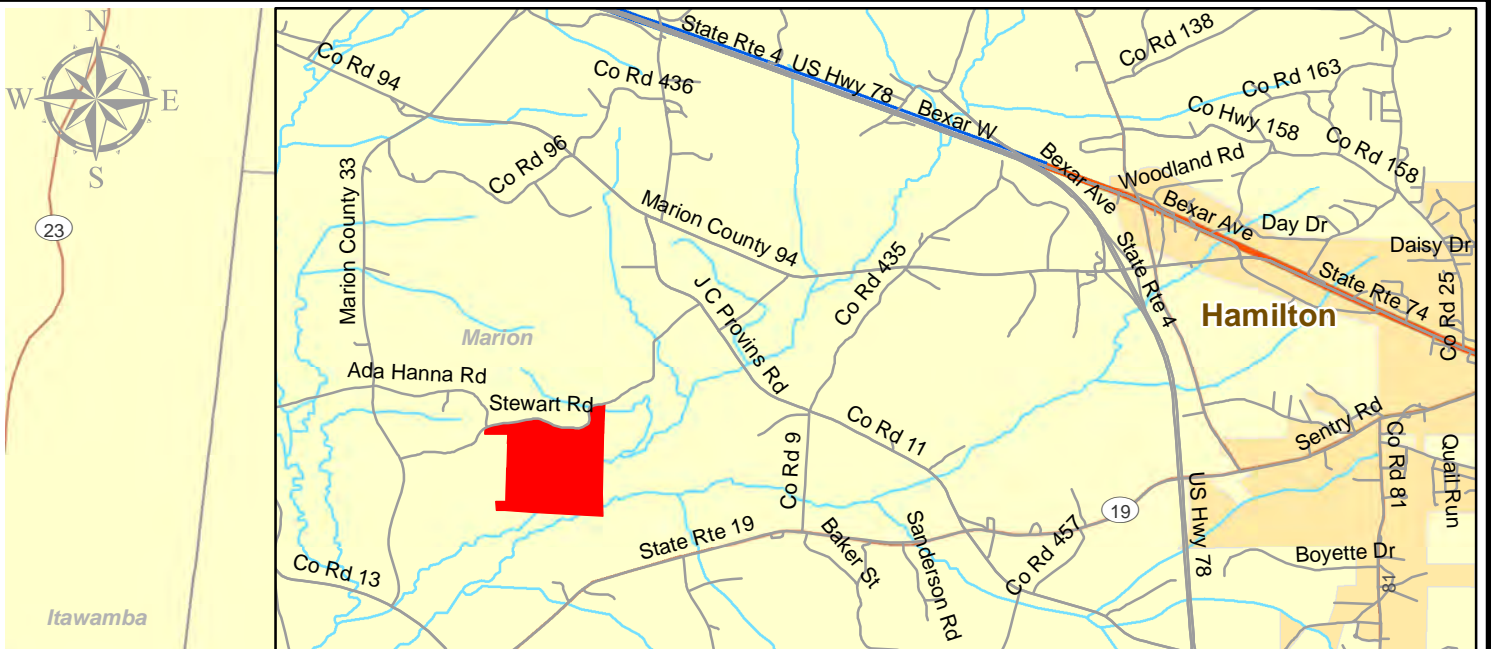
1,630 815 0 Feet

Boardtree Creek South Tract
209+- Acres Marion County, AI
S33 T10S R15W

February 25, 2021

Larson & McGowin
PROPERTIES

Map is for illustrative purposes only. Accuracy is neither warranted nor guaranteed.



Boardtree Creek South
209+ Acres Marion County, AL

February 12, 2021

Map is for illustrative purposes only. Accuracy is neither warranted nor guaranteed.

Larson & McGowin
PROPERTIES

2 1 0 Miles