

Larson &  
McGowin  
PROPERTIES

# Boardtree Creek TRACT

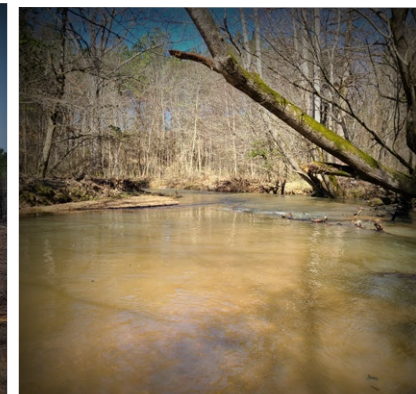
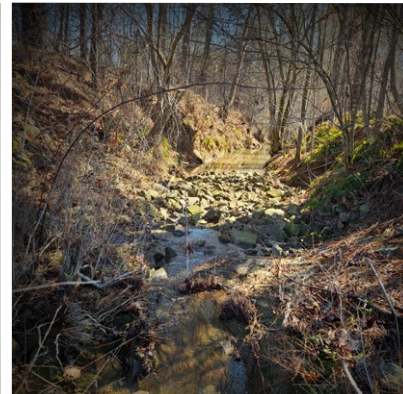
463± Acres Marion County, Alabama



**NORTH**



**SOUTH**



Offered in its entirety or as two tracts the Boardtree Tract is located just minutes from I-22 and the city of Hamilton in Marion County. The property was replanted in February of 2021 with Loblolly pine. The topography is gently rolling offering enough terrain to provide great view sheds without compromising utilization of the tract. The south parcel has frontage on beautiful Boardtree Creek offering year-round water. A paved county road provides access to both parcels.

**Boardtree North 254± Acres \$355,600**

**Boardtree South 209± Acres \$345,000**



**Chandler  
Graham**  
Qualifying Broker

[cgraham@larsonmcgowin.com](mailto:cgraham@larsonmcgowin.com)

Phone: 205.977.7706 | Mobile: 334.734.1382

[www.larsonmcgowinproperties.com](http://www.larsonmcgowinproperties.com)

500 Office Park Drive Suite 430 Birmingham, AL 35223 | Branch Offices: Greenville, Alabama | Mobile, Alabama | Merryville, Louisiana  
Licensed in AL, MS, TN, LA, TX, AR, GA, KY, FL, & SC





T10SR15W29

T10SR15W28

T10SR15W32

T10SR15W33

Ada Hanna Rd

Stewart Rd

### Boardtree Creek North Stand

 Boundary

 Lob21

1,320 660 0 Feet

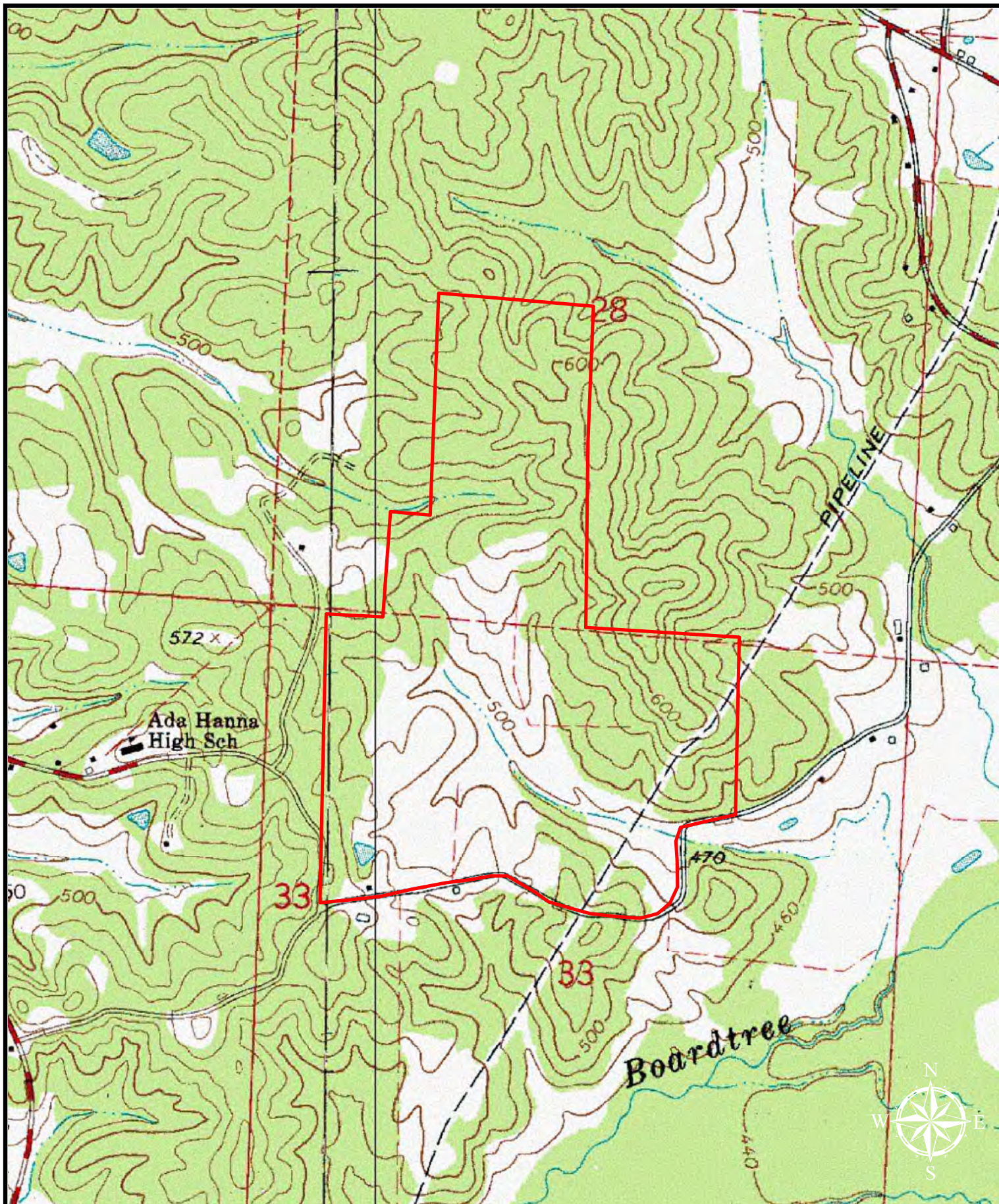
**Boardtree Creek North**  
**254+- Acres Marion County, AL**

February 12, 2021

Map is for illustrative purposes only. Accuracy is neither warranted nor guaranteed.

**Larson &  
McGowin**  
PROPERTIES





1,630 815 0 Feet

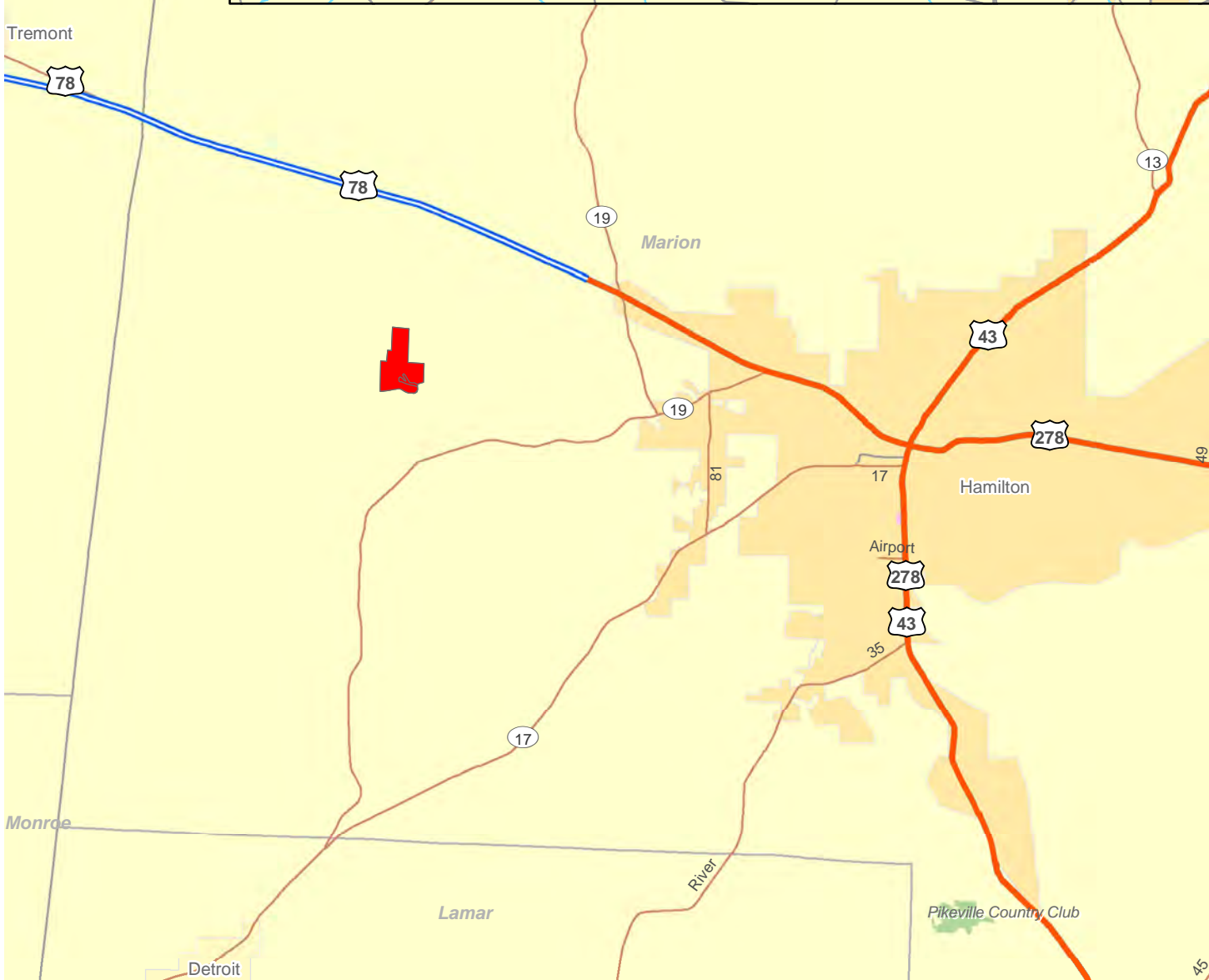
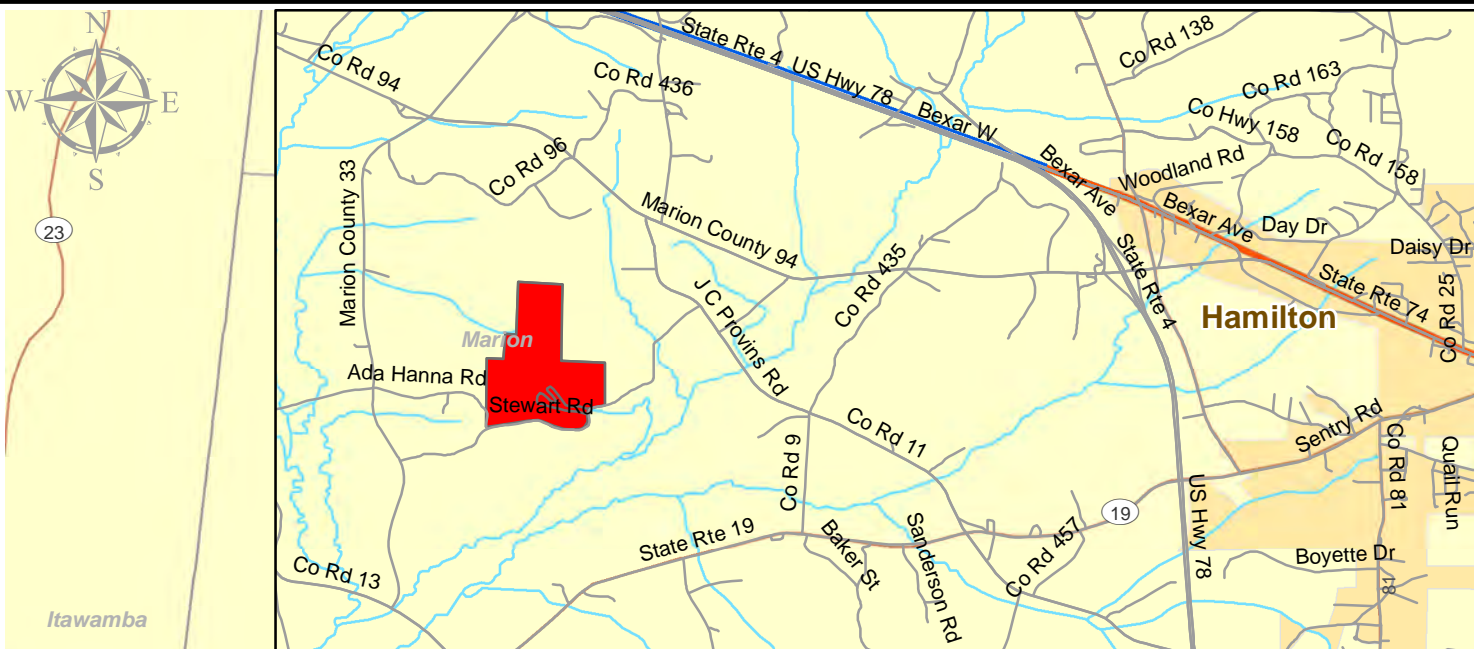
**Boardtree Creek North Tract**  
**254+- Acres Marion County, AI**

February 25, 2021

**Larson &  
McGowin**  
PROPERTIES

Map is for illustrative purposes only. Accuracy is neither warranted nor guaranteed.





**Boardtree Creek North  
254+- Acres Marion County, AL**

February 12, 2021

Map is for illustrative purposes only. Accuracy is neither warranted nor guaranteed.

**Larson &  
McGowin**  
PROPERTIES

2 1 0 Miles